



Gem & Mineral Journal



The Official Publication of The Gem and Mineral Society of Lynchburg, VA Inc.

March 2008

Volume 17 Issue 3

Presidents Message:

Hello To All,

Good news, spring is just around the corner, but we haven't been idle all winter. There were a number of members that enjoyed the trip to J.M.U. in January to the new mineral museum and geology lab. Also the bus trip to Washington, DC in February was well attended. There are two DMC field trips planned for March and April. The trip in March is fairly close to home; I hope club members will take advantage of this opportunity. We have traveled to Woodleaf Quarry, in N.C. some years ago and found some nice specimens as well as good yard rocks. Speaking of field trips, the GMSL has a number of new members that have joined this winter and I would like to take this moment to help them to get prepared for upcoming field collecting trips. Most of our trips are to working quarries and they require steel-toed boots, or sturdy high top shoes, hard hats, safety glasses or goggles. You will also need gloves for hand protection and basically a hand hammer, cold chisels, rock pick, pry bar and a larger sledge hammer if you want to collect specimens from large boulders.

There was an article in the AFMS newsletter about Tetanus. This is bacteria that can be picked up

out of the soil through an opening in the skin. You don't have to step on a rusty nail in a barnyard to contract this disease. It is in the soil everywhere, even in your flower or vegetable garden. Whether you are a new member or an old timer everyone needs a tetanus booster shot every ten years. Have you had yours since then? Just a word of caution, I want to see everyone stay safe. Safety is a big thing around working quarries or anywhere we collect. Pay attention to instructions given at the start of every trip, usually at the collecting site. There will be instructions about unsafe areas on site and limitations to where we may collect. These instructions are for your safety and not to be taken lightly. Remember that the people that work in these places day in and day out have a safety meeting every morning. So far the GMSL has a good safety record so lets be careful out there, and to remember to lookout for each other.

It's never too early to start thinking about the festivals we will participate in and the Lake Anna picnic and rock swap in June. If you would like to take part in any or all of these activities the details will be forthcoming in plenty of time for you to sign up.

Continued on page 9

From the First VP:

Did you know that ammonites are fossils from the cephalopod group? Cephalopods are marine mollusks that include the living nautilus, octopus and squid. And now you know.

Our thanks go to Don McIntyre for bringing that historic video of TV celebrities Marcus Beale, Dave Woolley and himself for the February meeting program. The moral of the story is to be careful what you say on TV because you never really know when it

will be played over again. And by the way, we do have a casting call for any star quality personalities who would be interested in representing The Gem & Mineral Society on TV. If interested contact an executive board member.

For March's meeting we have invited member Kenneth Conway to speak about radioactivity and the local rock features. Let's give Kenneth a warm welcome. See you at the meeting.

Cheers,
Steve

2007 ELECTED OFFICERS**John Haskins - PRESIDENT**

(434) 525-8430

JMHaskins1@netzero.net**Steve Boylan****First Vice President**

(434) 534-6108

boylansj@yahoo.com**David Callahan****Second Vice President**

(540) 297-1853

DBCALL1@aol.com**Dee Tinsley- Secretary**

(434) 221-0864

FlyDeeTin@gmail.com**Natalie Darling - Editor**

(434) 941-1899

gmseditor@comcast.net**Frank Midkiff- Treasurer**

(434) 239-8329

midkiff@aol.com**Members At Large-**

JoAnn Mason &

Tom Powers

COMMITTEE**CHAIR PERSONS:****Field Trips-** David Callahan**Hospitality-** Anne Torning**News Articles-** Natalie Darling**Silent Auction-** Warren Darling**Special Events-** Dee Tinsley**Swap for Rocks-** Frank Midkiff &
Warren Darling**Website-** Adelaide Lee**Workshops-** Dave Woolley**FRA Adult Liaison-**

February Meeting Minutes

Meeting: 7:00 PM, Wednesday,
February 20th, 2008**Attendance:** 33 members and 2
guests**Hospitality:** Steve Boylan thanked
Neil McIntyre, Ann Torning,
Dorothy & Bernard Rivera, Lynn &
Tom Powers and Jean & Frank
Midkiff for their contributions.**On Time Drawing:** Cindy Burns
won pyrite from Italy and Nancy
Patterson won agate from Lake
Superior.**Old Business:** John Haskins
reported that Natalie, Dee, &
Siglinde were on their way to
Mississippi for the Eastern
Federation Convention.
John read the amendments to the by
laws and the changes that were
made. It was presented to the
members for a vote and was passed
by a majority. Ralph Torning, got
info on color flyers verses black &
white. It was decided, due to cost,
we would keep black & white like
we now have except go for a better
quality paper.John showed the members a picture
of the calcite that Dr. Lenhart
purchased with the honorarium that
our club gave him. It is in the
museum with our clubs name on it.**First Vice President:** Steve
Boylan, read a thank you letter to
from Dr. Steve Lenhart. Dr Lenhart
extended an invitation for us to visit
the museum**Second Vice President:** Dave
Callahan reported the bus trip to
the Smithsonian museum still has

three seats unfilled.

Field trip schedule:

3/22 DMC trip to Marietta N.C.

Also 3/22 Chestnut Ridge for
crystals.

4/19 Chunky Gal GA

4/25 -27 Graves Mountain, Ga.

4/26-27 Franklin N.J.

2nd. or 3rd. week in April is

Glendon, N.C.

5/23, 24, 25th is Kentucky for
geodes

6/28 Beckley, WV for fossils.

Dr. Lenhart is working to get us in
the Dublin Quarry.

July- no trip scheduled.

8/1st 2nd 3rd Spruce Pine N.C.**Treasurer:** Franklin Midkiff we

have one new member tonight.

Treasury balance is \$4,267.56

with no outstanding bills.

New Business: John Haskins
announced that yearly insurance
for the trailer is \$25.00 for the
license and coverage would be
\$73.00 for each \$5,000 of content
coverage. Motion was moved to
go with the \$5,000 coverage.After the refreshment break,
Steve informed us that the
program for the evening was a
video from our archives. It
featured Dave Woolley, Marcus
Beal & Don McIntyre.After the program, members
gathered on stage to check their
bids on the silent auction.

The meeting was adjourned.

*Submitted by**JoAnn Mason, Member-at-Large*

The purpose of the Gem &
Mineral Society of Lynchburg,
VA, INC. is to promote
education in The Earth
Sciences including: Mineralogy,
Geology, Gemology,
Paleontology, and
Crystallography

The Gem and Mineral Society of Lynchburg VA, Inc.
Meets on the third Wednesday of each month,
From 7:00pm- 9:00pm
In the auditorium of the Parks and Recreation Building
301 Grove St. Lynchburg, VA 24501
Public is invited, Please join us!

Eastern Federation Convention

February 22nd -24th, 2008, Jackson Mississippi

Three members from the Gem and Mineral Society of Lynchburg, VA traveled to Mississippi to attend the Eastern Federation convention in February. Natalie Darling, (Bulletin Editors Advisory Chairman) Dee Tinsley, (Region IV Vice President) and Siglinde Allbeck (Delegate) were among the representatives from many clubs in the Eastern United States. There were Dinners, Banquets, Awards Breakfast, and the 50th anniversary show held by the Mississippi Gem and Mineral Society. (What a show!!) It was both enjoyable and educational meeting other rockhounds and federation officers during the events.

The Editors Breakfast, Hosted by Natalie Darling, was held on Sunday morning. The awards for bulletins and articles submitted during the 2007 calendar year were announced, and certificates and trophies presented to those present. Our club received a number of awards, which will be presented at our club meeting on Wednesday, March 19th, 2008. Did you submit an article in 2007? You may be an award winner. Come on out to the meeting and help us congratulate all of our winning members!



Natalie and Dee at the Editor's Breakfast.



Dee Natalie Siglinde

The Crater of Diamonds & The Jimmy Coleman Crystal Mine

Article and Photo by Dee Tinsley

The Crater of Diamonds is in Murfreesboro AK and is a dream come true for Natalie Darling, Siglinde Allbeck, and Dee Tinsley. The Crater of Diamonds is a 37-acre field of plowed mud. As the rains come down the diamonds work their way to the top. Beautiful Jasper and Pudding Stone were plentiful, and while no diamonds were discovered by the threesome, we were all delighted to come home with Jasper that was beautiful and pudding stones that would be the envy of anyone.

Having spent a few hours there without a means of sifting the soil, we decided to head from Murfreesboro, which is South West of Little Rock, to Jesseville, AK which is North East of Little Rock. Here we found one of the two Coleman mines. Having spent quite a bit at the rock shop before heading into the mine, we decided we better do some serious digging. In the mine we met John and he was kind enough to come out, show us what to look for and explain you could pick up what was on the surface, or you could dig, break rock, etc. It was your choice.

Having had an over abundance of rain in both locations, we were beginning to learn to walk with weights on each foot. It was called "mud". In Murfreesboro it was a dark rich looking mucky mud from an old volcano and in Jesseville it was great hunks of RED Clay much like we have in areas of VA.

Naturally we did not let a little thing like MUD stop us. Having left our room early that morning, and spending much of the day playing in the mud, we traveled with Memphis TN in our minds. We found a room in West Memphis and hit the showers and the bed.

Being a little more alert the next morning we discovered we were in West Memphis AK and still had to cross the Mississippi River.

Believe it or not, we traveled in wind, rain, sleet, snow and a smidgen of sun! We saw flooding, stagnant water, wind destroyed billboards, straight-line wind results or where a tornado had gone through. We traveled for 14.5 hours on our way home, but made Lynchburg VA by 11:00 PM and Amherst by 11:30 PM safe and sound. If you ever get the chance to make this journey, do it. It is amazing!

Additional photos on page 14 for electronic viewers.



Giant quartz crystals line a rock ledge at the mine.

Field Trip Report

*Article Submitted by Dave Callahan,
Field Trip Chairman;
Photographs by Don McIntyre*



Above: The group assembled on the steps of the museum prior to splitting up to enjoy the exhibits.

Below: New member Nancy Patterson stands beside a plate of quartz crystals from Arkansas.



Lynchburg Gem and Mineral Society 2nd V.P. Report March 2008 Smithsonian Museum of Natural History February 23rd 2008

Another great Smithsonian field trip was thoroughly enjoyed by all. We ended up with 50 due to some last minute cancellations. Not quite a full busload but we had a very enthusiastic group. The weather was wonderful, no rain or snow and not too cold. Our Abbott Trailways driver was club member Bill Tinsley, husband of Dee Tinsley our Secretary and Region IV Vice-President for the EFMLS. He did a great job of getting us there and back home safely.

There were many people at the museum. It was encouraging to see the public interest in gems, minerals and earth sciences. Most people were truly amazed by the beautiful gems and minerals on display there. These are, in most cases the best on display in the world today. This is my fourth visit and even though many of the displays are unchanged, I leave there with great satisfaction and a deep appreciation for the beautiful minerals that have been preserved for our knowledge and viewing pleasure.

I can hardly wait to return. There is so much to see and so little time to absorb it all. Hopefully we will be able to schedule another trip next year.



*Calcite with duftite inclusions
Tsumeb, Namibia*



*Wulfenite with mimertite
Sonora, Mexico*



*Calcite, manganoan
Ouray, Colorado*



Fluorite from various locations

Up Coming Field Trips




For further information on field trips, contact David Callahan,
540-297-1853
Email dbc11@aol.com

Official combined field trip of THE GEM & MINERAL SOCIETY OF LYNCHBURG, VA. THE ROANOKE VALLEY MINERAL & GEM SOCIETY INC.

There are two March field trips described below.

If you do not want to join us at the Woodleaf Quarry in NC, then perhaps collecting beautiful quartz crystals at Chestnut Ridge in Bath County, Virginia may be more to your liking. We hope that you will take advantage of these opportunities.

This combined Lynchburg / Roanoke Club field trip will be to join with the Dixie Mineral Councils other 30 plus clubs in one of the rare opportunities to collect in a near by quarry. The Lynchburg Club has been a member of the DMC for about 10 years and we sponsored our forth field trip last year at the Mt Athos Quarry. We are the most northeastern club and the only club in Virginia. Most of the DMC field trips are in Georgia, South Carolina, North Carolina, Tennessee, Kentucky, Mississippi, Alabama and Florida. There is a DMC field trip each month and we should support them at every opportunity. We will publish a notice of upcoming DMC trips in case anyone wants to attend as an individual club member. Ask me for any details if you find one of interest.

This will be a great opportunity support the DMC program, meet with fellow rockhounds from all around the southeast, make new friends and renew old acquaintances.

I know that this is Easter weekend but you can get an early start Saturday morning and return home Saturday afternoon. It is only about a 3-½ hour drive. I plan to leave about 4am and be home by 6pm

The Southeast Federation of Mineralogical Societies. Inc The Friendly Federation - Founded in 1976 to serve.

DMC Program of the SFMS Field Trip Committee

An Official Field Trip of The Gaston County Gem, Mineral & Faceters Club - Gastonia, NC (HOST)

An Official Field Trip of the Roanoke Valley Mineral and Gem Society And

The Gem and Mineral Society of Lynchburg VA Inc

Saturday, March 22, 2008 ~ 8:00 am Till Noon

Martin-Marietta Quarry ~ Woodleaf, North Carolina

(You must sign up for this trip.) Call me, email me, or sign up at the meeting to get on the list. David Callahan, 540-297-1853, dbc11@aol.com

WHERE: Martin-Marietta Quarry, Woodleaf, NC

WHEN: 8am till Noon - Saturday, March 22, 2008

TIME: Meet at the quarry at 8:00am to sign liability waivers and receive the **MANDATORY safety briefing before entry to the active quarry.**

COLLECTING: Calcite, Chabazite, Chalcopyrite, Epidote, Feldspar, Fluorite, Hornblende, Molybdenite, Natrolite, Prehnite, Pyrite, Quartz and many micro-minerals still to be listed. There have been excellent specimens collected at this location and we hope to find more of the good stuff this trip.

EQUIPMENT: (REQUIRED) Hardhat, safety glasses, long pants and heavy shoes. No tennis shoes or sandals! You will also need to bring your hard-rock collecting tools - Sledge hammers, chisels, rock hammers, collecting bags or buckets and newspaper to wrap your finds. Also bring snacks and plenty of water to drink. Dress for the weather this day. Check the forecast for Statesville, NC or Salisbury, NC.

NOTE: STAY AWAY FROM ALL HIGH WALLS OR YOU WILL BE ASKED TO LEAVE! Any violations of safety policies will result in exclusion from future digs.

DRIVING TIME: From ether Lynchburg or Roanoke the distance is between 160 to 170 miles depending on your route. You should allow at least 3.5 hours driving time plus stops.

DIRECTIONS: From **LYNCHBURG, VA** The most direct route is US 29 south to Greensboro, I-85 to I-40 west to US 601, exit 170. Follow US 601 south 8 miles thru Mocksville, NC. and then Rt. 801 south 6 miles to Woodleaf. Turn right (west) on Woodleaf / Barber Road. On some maps this is Quarry Road. The quarry is on your right. There should be other rockhounds already there so get in line or park in the designated area. **DO NOT BE LATE!** Plan your trip so that you arrive at the quarry between 7:30 and 7:45 am.

Continued on next page

Up Coming Field Trips

Continued from page 5

For further information on field trips,
contact David Callahan,
540-297-1853 Email dbc11@aol.com

DIRECTIONS: From ROANOKE, VA. The most direct route is to head south on I-77. This can be reached by the Blue Ridge Parkway to Fancy Gap (check to be sure it's open all the way) By Rt. 220 south to Hillsville or I-81 to Fort Chiswell and south on I-77. Follow I-77 all the way to Statesville, NC. Continue south on I-77 crossing I-40 and go east on US 70 (exit 49) toward Salisbury, NC. Continue about 14.5 miles and go north on Rt. 801. Continue north on 801 for about 3.5 miles and turn left (west) on Woodleaf / Barber Road. On some maps this is Quarry Road. The quarry is on your right. There should be other rockhounds already there so get in line or park in the designated area. **DO NOT BE LATE!** Plan your trip so that you arrive at the quarry between 7:30 and 7:45 am.

ROANOKE & LYNCHBURG CLUB CONTACT: David Callahan, 540-297-1853 dbc11@aol.com

DMC CONTACT: Doug Dover, 704-825-9580 ddover@carolina.rr.com

"Field trips are open to all members of associated clubs of the DMC program of the SFMS Field Trip Committee and to all members of SFMS member clubs who have provided their membership with SFMS liability insurance. Because of insurance requirements, members of the GENERAL PUBLIC are NOT invited on this or any DMC program field trips!"

MARCH 22, 2008 ~ 9:00 AM OFFICIAL ALTERNATE COMBINED MARCH FIELD TRIP CHESTNUT RIDGE, BATH COUNTY, VIRGINIA

(You must sign up for this trip.) Call me, email me, or sign up at the meeting to get on the list. David Callahan, 540-297-1853, dbc11@aol.com

Combined Field Trip with Southern Maryland Rock and Mineral Club to Chestnut Ridge, Bath County, VA for Quartz Crystals (loose and in clusters) --- (crystals are plentiful --- everyone will find them!)

Date: Sat., March 22, 2008 (Combined trip with Richmond, Lynchburg and Roanoke clubs)

Meeting Time/Location: 0900 a.m. at the old Loan Farm at foot of Chestnut Ridge.

Directions: From Lynchburg: Allow at least 2 hours minimum for the 80-mile trip. Take US 29 north to Amherst and Rt. 60 to Buena Vista and I-81 north. Almost immediately take I-64 west and take the first exit 55. Follow Rt. 39 and 252 north. Stay on Rt. 39 all the way thru Goshen. Then Rt. 39 and 42 west 5 miles to RT 640 north. Drive 6.7 miles on 640 to the old Loan farm on the left. There is a new log home to the left. Park out of the way in the grass field. Meet the other rockhounds there no later than 9am.

Directions: From Roanoke: Allow at least 1 hour 45 minutes minimum for the 70-mile trip. Take Rt. 220 north 43 miles to I-64 east and two miles to exit 29. Take Rt. 42 north 17 miles to Millboro Springs and Rt. 39 east about 3.5 miles to Rt. 640 north. Drive 6.7 miles on 640 to the old Loan farm on the left. There is a new log home to the left. Park out of the way in the grass field. Meet the other rockhounds there no later than 9am.

Food and drinks: Individual responsibility --- recommend bring water, lunch and snacks (be sure to take your trash back down the mountain. This is a beautiful site, so don't trash it.)

Topography: Site is a very steep climb over loose rocks/leaves/logs up a mountain for about a mile. Best crystals are near top (2700' elevation). Travel by foot only. Dave Lines will mark a trail (pretty much straight up) with surveyor's tape so you can climb at your own pace.

Tools: Rock hammer, garden scratcher, 5 gallon bucket / backpack (for your rocks), newspaper and baggies to wrap/protect your specimens. Optional: fold-up Army-style shovel & small screen to sift dirt.

Clothing: light winter clothing, brown cotton gloves, hat, sturdy footwear (Good hiking boots with ankle support). Recommend coveralls or old clothes while collecting so you can change them before getting back into you vehicle at the end of the day. It can be chilly, so cheap cotton gloves with tips of index finger and thumb cut off (to pick up crystals) are very helpful. A cheap plastic roll-up rain poncho is always good insurance.

Special remarks: this location has no restroom facilities. Be sure to bring food, snacks and plenty of water.

SAFETY NOTE: --- this is a fairly difficult trip. You must be in good physical condition --- i.e., able to hike 1+ mile up a steep mountain with your equipment (and return with specimens). -----If you have serious physical ailments, don't go. -----

Note to "first timers" --- yes, this is a long trip and a physically challenging climb; yes, kids can go; yes, you can find some crystals along the way to the top.

Approx Timeline: 9 am, Arrive at Loan farm; 9-11 am, climb mountain; 11 am to 3 or 4 pm, Find crystals; 4-5 pm, Descend mountain; 5-10 pm, Drive home.

NOTE: Snow cover / predicted bad weather such as snow, rain and/or all-day below-freezing temperature could cause this trip to be cancelled. This is our best opportunity this spring as Spring Gobbler (wild turkey) hunting season starts April 5th and lasts through May 17th.

Continued on page 11



Bill stands beside one of the displays at the museum.

Visiting Dinosaurs in Spain

Article and photographs submitted by Bill Gilbert

Hola! I know it has been awhile since I have last written an article for the newsletter. This has certainly been a very busy year with the surgery on both my hips and the job relocation in Spain.

I had the opportunity to visit a dinosaur museum that is in the same region of Spain where I live. This region is called Asturias. It is very hilly and mountainous area that is buffered by the Bay of Biscay on the north side. The museum is called MUJA – Museo Del Jarasico de Asturias. The museum is located between the towns of Colunga and Lantres.

The museum is about 1.5 hours drive from where I live at Gijon. This coastal area of San Telmo is known as the “Dinosaur Coast”. The museum itself was built in the shape of a three-toed dinosaur footprint. It is pretty impressive.

The museum has basically sectioned off with displays from the following time periods: Pre-Mesozoic, Triassic, Jurassic, Cretaceous, Post-Mesozoic and Asturian Jurassic. I am certainly not a dinosaur expert, but this museum was awesome. Upon approaching the museum, there were life-sized models of dinosaurs on the outside lawn. The cost of admission was about 5 euros.

Inside the museum, there were several large dinosaur displays of the bones put together and then behind it a large mural that showed how that particular dinosaur would have looked and its surroundings. An example of this was the Tyrannosaurus Rex display. It had two of these dinosaurs, one standing upright and the other down on an attack posture. Behind them was this giant mural depicting how they would have looked. There was also a large slab of fossilized mud that had actual dinosaur footprints.

Although the descriptions at each of the displays were in Spanish, it didn't take much effort to appreciate the grandness and the detail shown at this museum. The museum had a gift shop with books, replica fossils and dinosaur models to purchase. One thing to note in Spain, you cannot collect fossils here. There is another museum with the cave with early man's paintings, but that is another story. I hope you like the pictures! More adventures to come!

I have the same email – billis4rox@comcast.net.

Please email me if you have a chance!



From The Tekite 3/97
via Bective Buzzer 3/00



Schedule of Events

March 2008

March 14th-16th- Uniflour Gem Mineral & Jewelry show, Catawba Valley Gem and Mineral Club, Hickory Metro Convention Center, Hickory, NC.

March 13th-18th-Southern Maryland Rock & Mineral Club Annual Show, Clearwater Nature Center, Clinton, MD.

March 15th-16th- Annual Gem and Mineral Show Montgomery Co. Fairgrounds, Gaithersburg, MD

March 29th-30th- Che- Hanna Rock and Mineral Club Annual show Athens Twp. Volunteer Fire hall, 211 Herrick Av, Sayre, PA

April 18th-20th- Treasures of the Earth Gem, Mineral and Jewelry show. National Guard Armory, Charlottesville, VA Info at www.toteshows.com.

April 26th-27th- Annual New Jersey Earth Science Association Gem and Mineral Show and **Fluorescent Mineral Collecting Field Trips** sponsored by the Franklin-Ogdensburg Mineralogical Society, NJ Earth Science Assoc. & Sterling Hill Mining Museum, Franklin School/ Washington Ave. Franklin, NJ for details go to:

<http://jimcooper.biz/uvworld2/home.html>. or contact Dave Woolley

May 16th-18th- Treasures of the Earth Gem, Mineral and Jewelry show Martinsville, VA. Info. At www.toteshows.com

May 23rd-25th- Treasures of the Earth Gem, Mineral and Jewelry show Salem Civic Center, Salem, VA info at www.toteshows.com

Sun	Mon	Tue	Wed	Thu	Fri	Sat
						1
2	3	4	5	6	7	8
9	10	11	12	13	14	15
16	17 <i>St. Patrick's Day</i>	18	19 <i>Meeting 7:00 PM</i>	20	21	22 <i>Field Trips</i>
23 <i>Easter</i>	24	25	26 <i>Woolley's Workshop</i>	27	28	29
30	31					

Programs



Announcement for the March Meeting

Radioactivity and Uranium, Presentation by Kenneth Conway. Ken is a member of G&MSL and works as a Senior Radiation Safety Engineer. Presentation will include an overview of radioactive decay and natural sources of radiation. Also featured is a review of the Gretna Chatham Uranium ore body.

Announcement for the April Meeting

April's meeting will feature Astronomy as presented by Leslie Lane from The Blue Ridge Astronomy Club and Lynchburg College. She will speak about the planets, the sun, the moon and the stars. Be prepared to explore the universe.

Announcement for the May Meeting

Invited guest Jack Gary will present the Archeology of Poplar Forest and the surrounding area.

Presidents Message: *Cont. from pg 1*

In past years all participants have really had a good time and learned something new about our hobby. If you would like to learn more about club activities and have a hands on experience please come to our monthly workshops, they are held on the fourth Wednesday of the month at the home of Dave Woolley, here in Lynchburg. Information flyers are available at every monthly society meeting for details of time and place. We try to have an activity planned each month so come on out and see what may hold interest for you. I hope to see you at the March 19th meeting.

Keep Looking Down,
John Haskins

WANTED:

The Gem and Mineral Society of Lynchburg is currently looking to purchase a LARGE DIAMOND BLADE SAW. 24" blade preferred. New or Used will be considered if the price is right. Please contact John Haskins (434) 525-8430

JMHaskins1@netzero.net with information.

If purchased, this item will be available for use by club members to cut large specimens, geodes, etc.



*There was no
Executive Board
Meeting held in
February.*

WANTED:

Used faceting machine

Reasonably priced
Contact Dave Hardin at
hardin292@aol.com or
Call 434-237-0222

Welcome New Members:

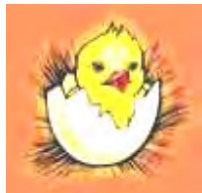
Amanda
Cochenour
& Kayla
Bradley
from
Goode, VA

John Feese
from
Lynchburg,
VA



Nancy
Patterson
from
Evington,
VA

Rachel
Unger
from
Keysville,
VA



SUNSHINE NEWS

I am not aware of any illnesses of late, so I hope this means that as spring arrives we will all be well and busily enjoying our hobby and nature's wonders.





Rock Raiders



Rockus Collectralus:

A Case Study

By Chris Lee, Junior Member of the Georgia Mineral Society

Reprinted from January 2008 edition of *Tips and Trips*, publication of the Georgia I

It is a horrible thing to be addicted to rocks. In the middle of the night you wake up, contemplating more purchases to make. The shelves in your house are overloaded, sagging under all the weight of 30% of the earth's crust sitting on them. You don't even bother showering any more, as the fine dust left on your hands from carrying rocks has built up to unmanageable levels. All but your best friends have abandoned you; they do not want to be seen in public with someone so dirty.

This is a glimpse into the life of a person affected by *rockus collectralus*, a horrible disease that causes compulsive rock collection. Sufferers of this disease can be easily identified by their bulging pockets, their vest covered in dust, and their beat-up hat. Many sufferers also can be seen at any place that rocks, minerals, or fossils are sold. They can be differentiated from other patrons by lack of the phrase: "how much?"

Unfortunately, there is no way to treat *rockus collectralus*. However, there are ways of making it more livable. One way is to provide frequent exposure to others with this disease; this will help the sufferer to maintain their sanity. Another way is to provide frequent opportunities and finances to purchase as many rocks as needed. This keeps everyone happy, except for your accountant and spouse. Finally, the most important way to treat *rockus collectralus* is to have more social contact than just your rock dealer, and to not spend all day organizing, tagging, gazing at, and researching your collection.

If all of the above steps are followed, sufferers of *rockus collectralus* can have some of their lives back, and be on their way to recovery.

Mission Statement

Future Rockhounds of America is a nationwide nonprofit program within the American Federation of Mineralogical Societies that develops and delivers quality youth activities in the earth sciences and lapidary arts in a fun, family environment. Our underlying goals are to foster science literacy and arts education through structured activities that are engaging and challenging and by which kids- and the adults who mentor them- learn while having fun.

Food Sign Up List for the March Meeting:

Sodas: John Haskins (2)
Natalie Darling (2) Diet

Meats: Anne Torning

Breads: Anne Torning

Desserts: JoAnn Mason

Chips and Dip: Natalie Darling (Taco Dip and Tortilla chips)

As always, if you did not sign up and would like to contribute to our meeting refreshments, please use the list as a guide and feel free to add your contribution.

Up Coming Field Trips

Continued from page 6



ROANOKE & LYNCHBURG CLUB CONTACT FOR QUESTIONS AND DETAILS: David Callahan, 540-297-1853 dbc1@aol.com

*** So. MD Club members and other club trip leaders ---- please CALL Dave Lines at (301) 934-9396 at least 12 hours ahead of trip to confirm.*** (Email address for other matters or questions is "dave.lines@earthlink.net")

Other upcoming DMC Field Trips open to club members only (no guests). If you are interested in attending and want more information, please contact Dave Callahan or use the contact information provided by the host clubs.

DMC Program of the SFMS Field Trip Committee

An Official Field Trip of Northeast Georgia Mineral Society, Cornelia, GA (Host)

Saturday, April 19, 2008 ~ 9:30 AM
Chunky Gal Mtn., Corundum Knob ~
Clay County, North Carolina
NO FEE

COLLECTING: Ruby corundum (pink to red), Spinel (black to brown "galaxite" and magnesiochromite), Sapphirine, Talc, Serpentine, Brucite (white to blueish chalky chunks), Tremolite, Actinolite, Smaragdite (chrome-emerald green amphibole), Pyroxine (chrome diopside/sparse green micro-crystals of weathered amphibolite matrix), Fuchsite and Dunite.

ACCOMMODATIONS: Franklin, NC is the best bet for lodging and restaurants, especially on US-441, US-64, and NC-28.

DMC CONTACT: Richard Walter at 770-532-8874 e-mail r fw912@yahoo.com or Kim Cochran at 770-979-8331

Graves Mountain "Rock Swap and Dig"

8 am to 6 pm, Friday, April 25, 2008
8 am to 6 pm, Saturday, April 26, 2008
8 am to 6 pm, Sunday, April 27, 2008

The caretaker in charge of Graves Mountain, Clarence Norman Jr., has announced plans to hold A three day dig and rock swaps on the Mountain during April 25, 26, & 27 2008. He will have the mountain open to collecting from 8 am to 6 pm each day. All participants must stop at the welcome table in the Hospitality tent to sign a liability release and make a small contribution to defray the cost of opening the mountain and providing port-o-lets. There will be several golf cart type, four wheeled vehicles available to transport those participants who have trouble walking long distances. The dig will cease and everyone is expected to be off the mountain by around 6 pm each day. Participants will be allowed to park in a designated area on the mountain.

Junior will set aside an area in the upper parking lot for tables to be setup for daily rock swaps. Anyone who would like to setup a table(s), please contact Junior at the phone numbers listed below. Hot food cooked on the grill, cold drinks and chips will be available for purchase on the mountain during all three days of these events.

Clarence Norman, Jr 706.359.3862 (his business) or
www.gamineral.org/commercial-gravesmountain.htm

STANDARD MINERALS Spring annual open house

Probable Date:
APRIL 12TH or
19TH, 2008
 the best pvrte collecting
 site around

Details will follow when
 the quarry has set the
 date.

Official Combined Lynchbura/Roanoke April Field Trip:

FRANKLIN / STERLING HILL, NJ.
APRIL 25.26.27. 2008
FLUORESCENT MINERAL
CAPITAL OF THE WORLD
 Reserve these dates if you
 would like to attend.
 More details at the meeting and the
 April newsletter.
PLANS ARE BEING FINALIZED

Official Combined Lynchbura/Roanoke May Field Trip:

3RD ANNUAL
KENTUCKY GEODE
ADVENTURE
MAY 23,24, 25, 2008
 Reserve these dates.
 Details will follow as plans
 are finalized.



Up Coming Field Trips

Continued from page 6



ROANOKE & LYNCHBURG CLUB CONTACT FOR QUESTIONS AND DETAILS: David Callahan, 540-297-1853 dbcalls1@aol.com

*** So. MD Club members and other club trip leaders ---- please CALL Dave Lines at (301) 934-9396 at least 12 hours ahead of trip to confirm.*** (Email address for other matters or questions is "dave.lines@earthlink.net")

Other upcoming DMC Field Trips open to club members only (no guests). If you are interested in attending and want more information, please contact Dave Callahan or use the contact information provided by the host clubs.

DMC Program of the SFMS Field Trip Committee

An Official Field Trip of Northeast Georgia Mineral Society, Cornelia, GA (Host)

Saturday, April 19, 2008 ~ 9:30 AM
Chunky Gal Mtn., Corundum Knob ~
Clay County, North Carolina
NO FEE

COLLECTING: Ruby corundum (pink to red), Spinel (black to brown "galaxite" and magnesiochromite), Sapphirine, Talc, Serpentine, Brucite (white to blueish chalky chunks), Tremolite, Actinolite, Smaragdite (chrome-emerald green amphibole), Pyroxine (chrome diopside/sparse green micro-crystals of weathered amphibolite matrix), Fuchsite and Dunite.

ACCOMMODATIONS: Franklin, NC is the best bet for lodging and restaurants, especially on US-441, US-64, and NC-28.

DMC CONTACT: Richard Walter at 770-532-8874 e-mail rhw912@yahoo.com or Kim Cochran at 770-979-8331

Graves Mountain "Rock Swap and Dig"

8 am to 6 pm, Friday, April 25, 2008
8 am to 6 pm, Saturday, April 26, 2008
8 am to 6 pm, Sunday, April 27, 2008

The caretaker in charge of Graves Mountain, Clarence Norman Jr., has announced plans to hold A three day dig and rock swaps on the Mountain during April 25, 26, & 27 2008. He will have the mountain open to collecting from 8 am to 6 pm each day. All participants must stop at the welcome table in the Hospitality tent to sign a liability release and make a small contribution to defray the cost of opening the mountain and providing port-o-lets. There will be several golf cart type, four wheeled vehicles available to transport those participants who have trouble walking long distances. The dig will cease and everyone is expected to be off the mountain by around 6 pm each day. Participants will be allowed to park in a designated area on the mountain.

Junior will set aside an area in the upper parking lot for tables to be setup for daily rock swaps. Anyone who would like to setup a table(s), please contact Junior at the phone numbers listed below. Hot food cooked on the grill, cold drinks and chips will be available for purchase on the mountain during all three days of these events.

Clarence Norman, Jr 706.359.3862 (his business) or
www.gamineral.org/commercial-gravesmountain.htm

STANDARD MINERALS Spring annual open house

Probable Date:
APRIL 12TH or
19TH, 2008
 the best pvrte collecting
 site around

Details will follow when
 the quarry has set the
 date.

Official Combined Lynchbura/Roanoke April Field Trip:

FRANKLIN / STERLING HILL, NJ.
APRIL 25.26.27. 2008
FLUORESCENT MINERAL
CAPITAL OF THE WORLD
 Reserve these dates if you
 would like to attend.
 More details at the meeting and the
 April newsletter.
PLANS ARE BEING FINALIZED

Official Combined Lynchbura/Roanoke May Field Trip:

3RD ANNUAL
KENTUCKY GEODE
ADVENTURE
MAY 23,24, 25, 2008
 Reserve these dates.
 Details will follow as plans
 are finalized.



Websites to visit: Lynchburg Gem and Mineral Society:

www.lynchburgrockclub.org

The SFMS Newsletter, the Eastern Federation Newsletter, and the

AFMS Newsletters are available for all members to read on line at the Federation Websites:

www.amfed.org/sfms, www.amfed.org and www.amfed.org/efmls

Hobby Related Newsletters are available free of charge by emailing the editors below. Both are great sources of information and worth checking out.

(Available only via email)

rudybland@worldnet.att.net (*Mineral Mouse, editor Rudy Bland*)

rockhound_zack@yahoo.com (*Zack's Rocks and Minerals, editor Zachary McKinney*)



The Gem & Mineral Society of Lynchburg, VA Inc.

Natalie Darling, Editor

211 Chesterfield Rd.

Lynchburg, VA 24502 www.lynchburgrockclub.org

The purpose of the Gem & Mineral Society of Lynchburg, INC. is to promote education in The Earth Sciences including: Mineralogy, Geology, Gemology, Paleontology, and Crystallography



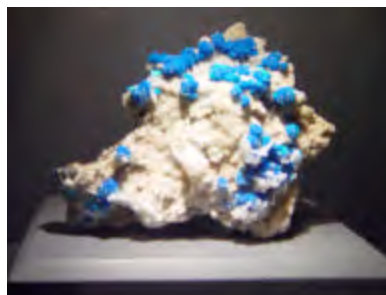
Lynchburg Rock Raiders is the official FRA association of The Gem & Mineral Society of Lynchburg, VA INC



Happy Easter



Additional Smithsonian Photographs, Submitted by Don McIntyre



Additional Photograph from the Mississippi/Arkansas Trip submitted by Dee Tinsley and Natalie Darling.



Petrified Forest, Flora, Mississippi

Arkansas Quartz



Siglinde picking up quartz crystals along the ridge in the beautiful Ozark Mountains.

