

Presidents Message:

Hello To All,

It's Festival time again. Uncle Billy's Day is on June 5th-6th. We will have three booth spaces in the area of 7th and Broad Street in Altavista, VA. We are Required to have all of our material on site by Friday afternoon as the streets will be closed to traffic until late Saturday evening, take down time. If you have material used in our booth, please bring it to Dave Callahan's by Thursday June 4th, so we can get everything loaded in the trailer.

We will need a couple of pickup trucks to take the buckets of water and sand for the sluice setup. There will be a sign up sheet for volunteers and more details at the May 20th meeting. I hope you will be able to help the club at this fund raiser, there is always plenty to keep you busy and is a great learning experience as well as a fun day.

I have just received a packet of raffle tickets from

Ellery Borow, Chairman of the Ways and Means Committee of the Eastern Federation. Ticket prices are \$1.00 each or 5 for \$4.00. The proceeds from ticket sales will go towards the Eastern Federation Fund for special projects, such as transferring programs to DVD's for use by the EFMLS member clubs. If you would like to see color pictures of the ten prizes to be awarded they can be seen on the EFMLS web site. Drawing will be held at the annual convention in October. I will have tickets for sale at the next few club meetings.

Nona and I had a great time on the May 2nd field trip to the Glendon, NC Quarry. After digging most of the day for some nice pyrite cubes we decided to look for some of the popular purple fluorite cubes found in some of the matrix at this site.

Continued on page 11

From the First VP:

Amazonite is the mineral for May. Amazonite is made of the elements potassium, aluminum, silicon, and oxygen and has a chemical formula of $KAlSi_3O_8$. Amazonite is a tectosilicate, which means that the silicates of amazonite form a framework structure. Amazonite is in the triclinic crystal system. You can get gem quality amazonite at the Morefield Mine in Amelia County Virginia.

Some of us have to go to summer school and starting in May I will be teaching summer school at night at Central Virginia Community College. So not being able to be in two places at one time, I may not be at the meetings.

Therefore all my responsibilities and authority, which by policy can be delegated, are hereby delegated.

Our thanks go to David Callahan for a great presentation on quarry safety. The drawings were interesting. Stay off those high walls and always, safety first.

For May's meeting we have invited club member Bill Gilbert to speak about his adventures in Spain in a presentation called Collecting Pyrite Cubes at Navajun, Spain. Let's give Bill a big welcome.

Cheers,
Steve

2009 ELECTED OFFICERS**John Haskins - PRESIDENT**

(434) 525-8430

JMHaskins1@netzero.net**Steve Boylan****First Vice President**

(434) 534-6108

boylansj@yahoo.com**David Callahan****Second Vice President**

(540) 297-1853

DBCALL1@aol.com**Dorothy Rivera- Secretary**

(434) 237-0673

[ddrivera55@gmail.com](mailto:drivera55@gmail.com)**Natalie Darling - Editor**

(434) 941-1899

gmseditor@comcast.net**Frank Midkiff- Treasurer**

(434) 239-8329

midkiff@aol.com**Members At Large-**

JoAnn Mason &

Tom Powers

COMMITTEE**CHAIR PERSONS:****Field Trips-** David Callahan**Hospitality-** Anne Torning**News Articles-** Natalie Darling**Silent Auction-** Warren Darling**Special Events-** Dee Tinsley**Swap for Rocks-** Warren Darling**Website-** Alan Rice**Workshops-** Dave Woolley**FRA Adult Liaison-** David Murphy**Membership-** Ralph Torning

April Meeting Minutes

Meeting: Wednesday, April 15th, 2009**Attendance:** 26 members and 2 guests**Hospitality:** Steve Boylan thanked members who generously brought in food.**On Time Drawing:** Dakota Henderson, Franklin Midkiff, and Fred Mason. Congratulation winners.**Old Business:** John Haskins 4/11 there was a workshop at Dave Callahan's to prepare for the upcoming festival fundraisers. Membership dues must be paid in order to go on field trips.**First Vice President:** Steve Boylan announced Upcoming Programs are: May Bill Gilbert will speak on rock collecting in Spain.

June: Natalie Darling and Siglinde Allbeck will talk about their experiences at Wildacres. July: A program on Dinosaurs. Steve would appreciate any ideas or suggestions for future programs.

Second Vice President: Dave Callahan: On 4/18 there will be a trip to Barger Quarry.

4/21 to 4/26 Kentucky Mushroom Festival. 4/25 Sterling Hill, N.J. to collect fluorescent minerals. 5/2 Glendon, N.C. 5/30 Morefield Mine; 6/19-21st Kentucky Geode Collecting Trip.

9/19th Willis Mt. to collect Kyanite. Rain date will be the 26th.

Treasures Report: Franklin Midkiff reported a balance of 2,490.66 with no outstanding bills.**Program** Tonight's program is on Mine Safety and our guest speaker is Dave Callahan.**New Business:** On 4/30 there will be a workshop at Natalie Darlings' home at 6:30 til ? On 5/9 there will be another workshop at Dave Callahan's home. Volunteers to participate in these workshops will be greatly appreciated. At Uncle Billy's day we will have 3 spaces to set up, and will again be at the mercy of our dedicated volunteers. Please come out and join us, even if only for a short time. Your continued support and encouragement are truly appreciated.

Dave Wooley; Will be having a yard sale later this year. He will be bringing specimens/yard rocks to the club meetings to sell.25% of his sales will go to the club.

**Minutes submitted by
Dorothy Rivera, Secretary**

The purpose of the Gem & Mineral Society of Lynchburg, VA, INC. is to promote education in The Earth Sciences including: Mineralogy, Geology, Gemology, Paleontology, and Crystallography

*The Gem and Mineral Society of Lynchburg VA, Inc.
Meets on the third Wednesday of each month,
From 7:00pm- 9:00pm
In the auditorium of the Parks and Recreation Building
301 Grove St. Lynchburg, VA 24501
Public is invited, Please join us!*

Programs

Our April meeting program featured Field Trip Chairman Dave Callahan speaking on collecting and mine safety. Below is a copy of the information for you to review. Please review these safety practices and let's uphold our reputation as a safety conscious, respectful group of mineral collectors.

2009 SAFE QUARRY COLLECTING PRACTICES

The Gem and Mineral Society of Lynchburg, VA. Inc.
The Roanoke Valley Mineral and Gem Society Inc.

Always be on time and at the appointed place for a field trip so that you can hear and understand all the safety issues and hazard training before entering the quarry.

All of this information is very important for your safety and by not following all the rules to the letter; you stand a very good chance of getting injured or being escorted out of the quarry.

The two most abused safety rules are venturing too close to the high wall and going behind barriers. The high wall is the most dangerous place in the quarry, and at the safety briefing you will be told how far to stay away from the wall. If you abuse this rule, you will be escorted out of the quarry and, depending on the circumstance, may be banned from future quarry field trips. This is serious business, folks, and as responsible club members, you are asked that if you see another member of our or another club venturing too close to the high wall or behind barriers, immediately get their attention and tell them in a polite manner that they are breaking safety rules and please move back to a safe area. If they do not respond, immediately notify the field trip leader or a club officer and they will take care of the situation. Several quarries in our area have been closed to collecting and clubs have been banned from all the company's quarries for breaking these rules. We do not want this to happen to our club, so we will rigorously support these rules. Think of what would happen to this club if we were banned from all the Boxley Quarries.

It's not a hard rule to follow folks. Just pay attention to where you are at all times. No mineral specimen is worth the consequences. If a situation does arise where there is collectable material close to a wall, notify the field trip leader and he will ask the quarry foreman in charge if he could move the pile for us with their heavy equipment. This has happened several times before.

PERSONAL EQUIPMENT

Have all your own personal required safety equipment with you and in good condition. This includes the following:

An approved **hard hat** with all the webbing and bands intact. Make sure that the hat is not cracked and the bands are not frayed or missing. Make sure that the ratchet adjustment works or the adjustment holes are secure.

Make sure that all **your hammers, chisels and other tools** are properly prepared and the heads are not mushroomed.

Make sure that your **safety glasses or goggles** are clean and not scratched or broken.

Make sure that your **steel-toed boots** are in good condition. Make sure that the laces are not frayed or broken. Make sure that the soles have tread and heels are not run over.

Make sure that your **gloves** fit comfortably and do not have holes. They should be leather or other strong material to protect your hands against cuts and misguided hammer blows.

Make sure that you have something to **protect and carry** your finds. Bring wrapping materials, buckets, tote bags or a backpack.

Wear proper-fitting **long pants and a long sleeved shirt** to protect your arms and legs from falls or flying debris.

Bring **sunscreen, snacks and plenty of water to drink.**

If you have a medical condition that might endanger you, tell your field trip leader or at least a collecting buddy who will be with you.

Never wander off by yourself. Always have a collecting buddy nearby. Stay with the group, always in eyesight or in hearing distance. You may need to summon help or respond to others in need.

Field Trip Report

PAST COMBINED FIELD TRIPS



Field Trip Report submitted by
Dave Callahan,
field trip chairman.
Photographs submitted by
Dave Callahan, John Haskins,
and Jack Curtin

C. W. BARGER & SON QUARRY LEXINGTON, VIRGINIA APRIL 18, 2009

We had a great trip, wonderful weather and a large diverse group. There were club members from the Lynchburg, Roanoke, Shenandoah Valley, Northern Virginia and the Richmond Clubs present. All together we had a total of 35. Some were new members and some were old timers, some were very knowledgeable and some were seeking knowledge. I hope that everyone had their questions answered to their satisfaction. Please always feel free to ask questions of our more experienced members. Almost all rockhounds will gladly assist you in your identification, what to look for and where to look. The only stupid questions are those that you do not ask.

I saw several very beautiful large calcite crystal specimens, many of which were not easily collected as they were on very large flat rock faces, making removal without damage almost impossible. Several nice ones were collected though. There was a lot of nice pyrite and some small purple fluorite crystals collected as well. Those with a sharp eye and the persistence to search around, behind and under rocks were almost always rewarded with nice finds.

I hope that everyone had an enjoyable experience and collected some nice material. Productive collecting in quarries can be unpredictable as usually the productive zones are small and scattered. Persistence, experience, a keen eye and some old fashioned good luck are the keys to successful collecting.



Pictures from the 2009 Franklin/Sterling Hill Fluorescent Mineral Field Trips, April 25th-27th 2009. Submitted by Jack Curtin.



Bernard Rivera, Dave Woolley and Jack Curtin
at the Franklin Mineral Museum in Franklin, NJ



Jack Curtin



Dave Woolley on the
underground mine tour.

Additional field trip
and workshop
photographs on
pages 13-15 for
electronic viewers.

Field Trip Report

STANDARD MINERALS CORP., GLENDON, NC.
MAY 2, 2009 ~ 8 AM to 3 PM

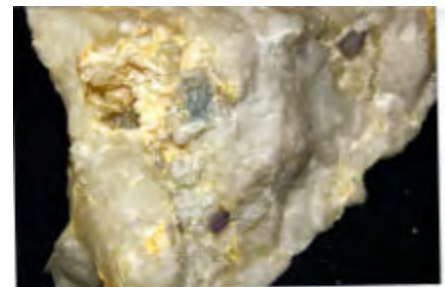


This was a beautiful day for collecting at the Glendon Quarry. It had not rained in over a week and things were pretty dry. The humidity was low and it was overcast most of the day and that made ideal collecting weather in my mind.

The Lynchburg and Roanoke Clubs were well represented with at least 20 members that I could count. There may have been several others that were on my list and maybe some that failed to let me know they were going.

Not much new ground was exposed but some piles had been moved around a little. Several people did find some 2inch to 3inch cubes and many smaller cubes were found as well. John and Nona Haskins discovered some wonderful large purple and blue fluorite crystals lurking within a very large quartz bolder. By large, I mean in the 1/2 inch to 3/8 inch category and perfect cubic crystals.

This quarry has been shut down for a while due to the economy and a decrease in sales. The management was pleased with the trip and we will likely be invited to return, possibly in the fall. Stay alert, as the email broadcast with sign-up information probably will be sent in late August or early September. This is the only way the Southeastern Federation will make the announcement and you must respond immediately to reserve your spot. All of the 120 or so spots will likely be filled before the end of that day. This is one more reason that we must be kept updated on your email address. If you are not getting the field trip broadcast each month, then I do not have a good address for you. Contact me at dbc11@aol.com and I will confirm your contact.



Impressive fluorite specimens collected at the Glendon Quarry by John and Nona Haskins. Photo by John Haskins.



Upcoming Field Trips

For further information on field trips, contact David Callahan,
540-297-1853
Email dbc11@aol.com

**Sign-up required for all field trips. Call, email, or see me at the club meeting.
Do NOT just show up at the quarry!**

OFFICIAL COMBINED MINERAL COLLECTING FIELD TRIP

The Gem and Mineral Society of Lynchburg Inc. --- The Roanoke Valley Mineral and Gem Society Inc.
Saturday, May 30, 2009 10:00 AM until 4:30 PM

MOREFIELD MINE (FEE SITE)

<http://www.toteshows.com/morefield.html>

Mine Phone 1-804-561-3399

THE MINE IS FOR SALE AND WILL BE CLOSED DURING THE SUMMER. CHECK WEB SITE FOR DETAILS AND HOURS AND DAYS OF OPERATION.

(THIS MAY BE YOUR LAST OPPORTUNITY TO VISIT THIS FAMOUS MINE)

TRIP: We will be visiting the famous 70 plus year old Morefield Mine in Amelia, Virginia. We will dig and collect in the old dumps, collect from newly mined material, wash our finds in the sluice line and have the rare opportunity to tour the underground mine workings. There will be picnic tables available on a first come basis. Each club should bring food and drink if we want to have a picnic lunch. We must bring our own lawn chairs and a grill. The closest fast food is McDonalds, several miles back in Amelia. There will be several other clubs attending. It will not be open to the general public.

COLLECTING: In addition to the beautiful green amazonite, there will be white clevelandite, several types of mica, massive white topaz, garnet, beryl and others. This mine is noted for many micro minerals that most people just discard. A gold pan is a great way to separate the heavier rare minerals. Take the concentrate home in a container, dry and observe under magnification.

FEES: General admission to collecting area - adult and senior - \$12.00 each, Children 3 and under free. Children --- Age 4 thru grade 2 (\$7.00), Grade 3 thru 6 (\$8.00), Grade 7 thru 12 (\$10.00)
Underground --- \$20.00 each (see restrictions and limitations below)
Combination Price --- \$30.00 collecting area and underground tour.

SPECIAL CONDITIONS: Restrictions on digging in the dump. No picks or mauls, no breaking rocks due to the danger of injuring those nearby. Wear sturdy footwear in the mine area. Flip-flops or sandals are not allowed. There is a one five-gallon bucket limit with each paid admission. Be sure to bring your own bucket. Additional bucket loads may be purchased for a reasonable fee. You will find a shovel, small short-handled hoe and screwdriver handy tools for digging. Zip lock bags are handy for your small finds.

DIRECTIONS: Meet at the mine at 10:00 AM. The mine is located in Amelia County, VA. and is 90 miles from Lynchburg. From US 360 just East of the McDonalds traffic light in Amelia, turn right on Rt. 628 (look for the brown State Morefield Mine sign). The mine entrance will be about 9/10 of a mile on the left. Follow the driveway all the way to the parking area, office and gift shop. If you want to drive as a group, we will meet at the **Jumbo Restaurant** on US 460 East just past the Lynchburg City limits in Campbell County. We will DEPART there at 8:15 AM, drive 460 thru Farmville and take Rt. 307 to US 360 and stop at the McDonalds in Amelia for a short break. The mine is only a couple of miles from there.

CONTACT: David Callahan, Home, 540-297-1853 Cell, 540 874-5201 (dbc11@aol.com)

Field trip report and Additional information on underground tours on continued on page 11

Schedule of Events...



May 2009

SHOWS & TRIPS

May 22nd-24th- Treasures of the Earth Gem, Mineral, Fossil and Beads show at the Salem Civic Center. www.toteshows.com for details.

May 29th-31st- Treasures of the Earth Gem, Mineral, Fossil and Beads show at the National Guard Armory, 315 Commonwealth Blvd, Martinsville, VA. www.toteshows.com for details.

May 30th- GMSL and RGMS field trip to Morefield Mine in Amelia. See field trip section for complete details.

June 6th - Uncle Billy's Day. Come visit our booth in the area of 7th and Broad streets in Altavista, VA. Bring your family and friends- there is much to see and do at this event.

June 18th-21st- Annual Kentucky Geode Adventure- see page 11 or contact Dave Callahan for details.

June 20th- Region IV annual picnic at Lake Anna. More information in next month's journal as it becomes available.

July 3rd-5th- DMC Field trip to the Hogg Mine, Lagrange GA. Hosted by the Mobile, AL gem and mineral society. Contact Trip Chairman: Larry Landry 251-653-8459 or 251-5915682 or email maryloulandry@aol.com www.amfed.org/sfms

Sun	Mon	Tues	Wed	Thurs	Fri	Sat
					1	2
3	4	5	6	7	8	9
10 <i>Happy Mothers Day!</i>	11	12	13	14	15	16
17	18	19	20 <i>Meeting 7-9PM</i>	21	22	23
24	25	26	27 <i>Woolley's Workshop</i>	28	29	30 <i>Field Trip</i>
31	Uncle Billy's Day June 6th					

UPCOMING PROGRAMS

Program for May: Collecting Pyrite Cubes at Navajun, Spain buy member Bill Gilbert. Or suggested alternate title "While working in Spain last year, look what I found in my pockets when I came back home."

Announcement for June Meeting

Invited talk on "A Wild Time at Wild Acres 2009" by Natalie Darling and Siglinde Allbeck

Our July Meeting Program

Invited talk about "Dinosaurs, The Earths Most Successful Predators and Prey" by member Captain Vic Fleet



Eastern Federation News

"Great Prizes Ahead" (Ellery Borow, Eastern Federation Ways & Means Chair) ~

Tickets are now available locally for the Eastern Federations 2009 Ways & Means drawing. John Haskins and Natalie Darling will have tickets at the May meeting. The cost is \$1.00 each or 5 for \$4.00. Prizes include: A 12 kt gold wire wrapped 8.36 ct. watermelon tourmaline pendant; A 12 kt gold wire wrapped pyritized ammonite fossil, Herkimer Diamond Earrings in 12kt gold; A beautiful framed picture jasper; an 8X10 floral painting of tumbled amethyst stones and brass wire; a pair of druzy quartz lined Oco Geodes from Brazil, on custom fitted pedestals; A solitaire Quartz Crystal from Mt. Ida, AK; A Bostwana Agate/ Talaloc Botryoidal Agate pendant; and even one special surprise, that will not be described other than to say "if you are the lucky winner, you will be in for a real treat and a wonderful surprise."

Color pictures of the prizes can be viewed in the March and April editions of the EFMLS news, which can be downloaded at

<http://www.amfed.org/efmls/newsletters.htm>.

The drawing will be held at the Eastern Federation Annual Convention, in Bristol, CT, October 16th-18th 2009. You do not have to be present to win, and we will have club members in attendance who would love to be bringing back *YOUR* prizes! Get your tickets now- you can't win if you don't have a ticket!

Sunshine News

Please keep club members **Lloyd & Lucille Watson and Ann Blair** in your thoughts and prayers as they recover from recent surgeries and illnesses.

We hope to see them at a meeting or event soon!

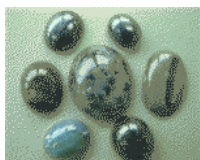


Reproduced below is an article from the May issue of the Rostrum, submitted by Gerald Elgert, Editor for the Maryland Geological Society.

The Grier fossil & mineral collections are up for sale by Dick, Sr. and Jr. at 10% off. There are literally hundreds of mostly competition quality specimens available, and close to one thousand in all sizes. Specimens are both self-collected and purchased worldwide. We have been collecting for over 45 years. Still remaining are thousands of worldwide shark teeth, some very rare, obtained by trading with European collectors over the Internet. There are large numbers of ammonites, echinoids, and brachiopods, as well as fern fossils, vertebrate fossils and others. The minerals remaining include gold, emeralds, silver minerals, topazes, beryls, tourmalines, aquamarines, amethyst and heliodor. Minerals range from micromount and thumbnail size to museum-size. All specimens are crystallized. So far the meteorites, dinosaur teeth and the larger shark teeth have been sold, as well as my collection of tourmalines from around the world. Please come and visit us by appointment. Arrange for an appointment by calling Dick Grier, Sr. at (410) 285-5554. We live in Dundalk, a South East suburb of Baltimore, at 8052 Kavanagh Road. Come by and see us!

Tidewater Gem & Mineral Society
presents:
50th Anniversary Banquet
Friday, July 24, 2009
6:00 pm until 10:00 pm
6:45 pm - Dinner
Grand Affairs
2036 Pleasure House Road, Virginia Beach, VA

Contact Brooks Britt 757-484-3617



Rock Raiders

GEMS, MINERALS & ROCKS

While searching the wilderness and back hills of Wyoming, one geologist was able to find hundreds of minerals (some which had never been reported before in Wyoming), a variety of rocks and a King's Ransom in gemstones. Imagine colored gemstones >24,000 carats with some remaining in outcrops that could be >1 million carats. Imagine a deposit with more than 2 trillion carats of colored gemstones. Imagine an opal field with millions of opal cobbles, some >75,000 carats. Now imagine hundreds of diamond deposits, high quality gem garnet and diopside that rival some of the best rubies and emeralds in the world. Imagine several ruby and sapphire deposits, some of the higher quality peridot in the world, heliodor, aquamarine, gold nuggets and literally hills of jasper. This one geologist found these in a State that prior to 1975 only had a few known jade and agate occurrences. Wyoming went from one of the poorest gem states in the US to the most endowed in gems, only because one person decided to search for these deposits using scientific methods.

The gems, minerals and rocks are now described in a book published in 2009. *Gems, Minerals & Rocks of Wyoming – A guide for Rock Hounds, Prospectors & Collectors* (ISBN 1-4392-1856-0) available at Amazon.com (<http://WyGemstones@Blogspot.com>) (<http://GemHunter.webs.com>).

This is a descriptive text that will be followed by a second book "Mountains of Gold" (in preparation and expected to be published in late 2009) on how these discoveries were made using geological principals and geochemistry and the stories of many prospectors and rockhounds.

Free Downloads <http://www.wsgs.uwyo.edu/pub/bulletins/B-66.pdf> (Minerals & Rocks)
<http://www.wsgs.uwyo.edu/pub/InfoPamphlets/IP-9.pdf> (Gold prospecting)
<http://www.wsgs.uwyo.edu/pub/InfoPamphlets/IP-11.pdf> (Minerals)
<http://www.wsgs.uwyo.edu/pub/InfoPamphlets/IP-12new.pdf> (Diamonds)
http://www.rmag.org/rmag_uploads/outcrops/314.pdf (Gemstones)
http://www.rmag.org/rmag_uploads/outcrops/324.pdf (September 2006 - gold)
http://www.rmag.org/rmag_uploads/outcrops/327.pdf (Dec. 2006 - gold)
http://www.rmag.org/rmag_uploads/outcrops/330.pdf (march 2006- Gold).

<http://www.rmfmts.org/> Nearly all of the mineral and rock photos on the Rocky Mountain Federation of Mineralogical Societies web site were found by the author of *Gems, Minerals & Rocks of Wyoming – A guide for Rock Hounds, Prospectors & Collectors* who granted permission for the rmfmts to use on their site.

Mission Statement

Future Rockhounds of America is a nationwide nonprofit program within the American Federation of Mineralogical Societies that develops and delivers quality youth activities in the earth sciences and lapidary arts in a fun, family environment. Our underlying goals are to foster science literacy and arts education through structured activities that are engaging and challenging and by which kids- and the adults who mentor them- learn while having fun.

Executive Meeting Minutes

Meeting: May 6, 2009, 7:00 at the Parks and Recreation Department, 11 members in attendance.

John Haskins: Workshop Saturday at Dave Callahan's to finish projects for Uncle Billy's Day. Uncle Billy's Day June 6th. New location this year- 7th and Broad St. We will pack the trailer on Friday 6/6 beginning at lunchtime. Anyone who can help should come out to Dave Callahan's. Once the trailer is packed we will head down to Altavista to pick our spot and set the trailer up. Saturday AM will begin early with set up of the sluice, geode cracker and items for sale. Take down will be at the end of the day- any help will be greatly appreciated. Lynchburg Living had a nice article about club member Luis Gonzalez.

John and Natalie have raffle tickets for the EFMLS auction. \$1.00 each or \$4.00 for 5 tickets. They will be available at the meeting,

Steve Boylan: Programs: May- Collecting in Spain; June- Wildacres; July Dinosaurs; August- Rhodocrosite DVD; September- collectors night; October- Annual Auction; November-open, December- Pot Luck Holiday Dinner.

Alan Rice: Website up and running. Please send photos of field trips, etc, if you would like to see them on the website.

Dave Woolley, Bernard & Dorothy Rivera, and Jack Curtin enjoyed the annual Franklin NJ field trip and fluorescent mineral collecting.

Dave Callahan: Motion accepted for \$500.00 to be spent on geodes at Spruce Pine. We will continue to use our geode cracker as a fundraiser and will need to insure we have enough geodes on hand. Morefield Mine trip May 30th, June 18th-21st will be the annual KY geode adventure. MUST SIGN UP, as space may be limited this year. Sept. 19th Willis Mtn. Field trip.

Natalie Darling: will make arrangements to set up the display at the Nature Zone. Anyone who has specimens they would like included should bring them to this months meeting or call Natalie to arrange for pickup. Labels will include the donor's name. This will be a long-term loan, and when the display is taken down your specimens will be returned.

JoAnn Mason: Our advertisements have been placed in the Smith Mountain Lake and Lynchburg Living magazines.

Minutes submitted by Natalie Darling, Editor

Safety Committee – Don Monroe, Chairman
Reprinted in part from April 2009 loadstar, publication of the Southeast Federation of Mineralogical Societies.

This article is a portion of an e-mail received by a dear friend of mine and forwarded to me. Neither of us know who is the author - I would love to give that person credit. However this article is so good and so timely that I am including it for your education and enjoyment.

Tool Descriptions

WIRE WHEEL: Cleans paint off bolts and then throws them somewhere under the workbench with the speed of light. Also removes fingerprints and hard-earned calluses from fingers in about the time it takes you to say, "What the...?"

BENCH SANDER: Electric tool used to turn major refinishing projects into sawdust -- secondary uses are removing ridges from knuckles and all traces of grooves on fingers.

STRAIGHT SCREWDRIVER: A tool for opening paint cans. Sometimes used to convert common slotted screws into non-removable screws.

PRY BAR: A tool used to crumple the metal surrounding that clip or bracket you needed to remove in order to replace a 50 cent part.

PHILLIPS SCREWDRIVER: Normally used to stab the vacuum seals under lids and for opening old-style paper and- tin oil cans and splashing oil on your shirt; but can also be used, as the name implies, to strip out Phillips screw heads.

BAND SAW: A large stationary power saw primarily used by most shops to cut good aluminum sheet into smaller pieces that more easily fit into the trash can after you cut on the inside of the line instead of the outside edge.

TWO-TON ENGINE HOIST: A tool for testing the maximum tensile strength of everything you forgot to disconnect.

CRAFTSMAN 1/2 x 24-INCH SCREWDRIVER: A very large pry bar that inexplicably has an accurately machined screwdriver tip on the end opposite the handle.

OXYACETYLENE TORCH: Used almost entirely for lighting various flammable objects in your shop on fire. Also handy for igniting the grease inside the wheel hub you want the bearing race out of.

TABLE SAW: A large stationary power tool commonly used to launch wood projectiles for testing wall integrity.

PLIERS: Used to round off bolt heads. Sometimes used in the creation of blood-blisters.

Be Safe – Be Well

Presidents Message: *continued from page 1*

We found a nice 200-pound quartz boulder and proceeded to break it apart and to our surprise, inside were some of the largest fluorite cubes found there to date. This particular rock held some 6 different colors of fluorite. Several of us shared in collecting some crystals from this find. I hope to have some pictures elsewhere in this newsletter. I still have not received a response from JMU's Geology dept for the identification of the rest of the Zeolites from the Haw River dig, so I will let you know as soon as I find out. I hope to see you all at the May 20th Club Meeting. Until then.

Keep Looking Down,
John Haskins

Morefield Mine...continued from page 6

Restrictions on the underground mine tour. go as a group of 9 or fewer. Sign up when you pay your admission. The first group tour is about 1:00 PM. The second group will be after 3:30 PM, if needed. The tour will take between 1.5 to 2 hours. Everyone will have Hazard Training instruction and sign a release. You must wear the mine-supplied M-65 Self-Rescuer which fits a narrow-width belt. Be sure to bring your own belt. A Hardhat is required, so be sure to bring your own. You must wear good strong boots with good traction. Athletic or tennis shoes are not permitted. You must bring your own personal light source. You may also want to bring a camera or camcorder. They must be carried on your body or in a small shoulder bag. Both hands must be free for climbing the ladders. The trip into the mine requires climbing ladders. The main level is 45 feet below the surface and the other levels are at 32 feet and 60 feet. **It is a requirement that visitors be able and healthy enough to climb into and out of the mine under their own power.** There are platforms about every 12 feet where one can rest, but remember that physical exertion is required. The vertical ladder ways are tight and large people and backpacks may not fit. The final decision on who will be permitted to enter the mine is up to the mine owner. Children are not permitted to enter the mine, only older teenagers when accompanied by a parent. Dress according to the surface temperature. There will be some dripping water, especially on the 60-foot level, so a light rain jacket may be useful. There may also be some wet floors. **No mineral collecting will be permitted underground.**

FORTH-ANNUAL KENTUCKY GEODE ADVENTURE

JUNE 18th (travel) 19th and 20th, (collect)
21st (travel)

DANVILLE KENTUCKY AREA

PLANS ARE BEING FINALIZED---SIGN-UP-----
STAY TUNED

THIS TRIP WILL ONLY BE AVAILABLE TO
ACTIVE MEMBERS OF THE LYNCHBURG AND
ROANOKE CLUBS.

WE MAY NEED TO PUT A LIMIT ON THE
NUMBER ATTENDING, DUE TO THE
SENSITIVITY AND LOCATION OF SOME OF
THE COLLECTING SITES.

SIGN-UP EARLY TO RESERVE YOUR SLOT.



WILLIS MOUNTAIN ANNUAL FALL FIELD TRIP

SEPTEMBER 19, 2009(RAIN DATE
SEPTEMBER 26, 2009)

Information will e-mailed later so reserve these
dates. This will be a big event with a lot of clubs
attending

The Gem & Mineral Society of Lynchburg, VA Inc.

Natalie Darling, Editor

211 Chesterfield Rd.

Lynchburg, VA 24502 www.lynchburgrockclub.org

The purpose of the Gem & Mineral Society of Lynchburg, INC. is to promote education in The Earth Sciences including: Mineralogy, Geology, Gemology, Paleontology, and Crystallography



Lynchburg Rock Raiders is the official FRA association of The Gem & Mineral Society of Lynchburg, VA INC



Happy Mothers Day!



Attention All Club Members: Donations are being gathered for a Gem and Mineral Display at the Nature Zone, Located in the Kemper St. Station.

Please bring donations to the May 20th meeting or Call Natalie to arrange for pickup. This will be a long-term loan display.

Donor's names will be on the labels, and specimens will be returned when the display is taken down or specimens are changed.

Websites to visit: Lynchburg Gem and Mineral Society:

www.lynchburgrockclub.org

The SFMS Newsletter, the Eastern Federation Newsletter, and the AFMS Newsletters are available for all members to read on line at the Federation Websites:

www.amfed.org/sfms, www.amfed.org and www.amfed.org/efmsl

Hobby Related Newsletters are available free of charge by emailing the editors below. Both are great sources of information and worth checking out.

(Available only via email)

rudymbland@worldnet.att.net (*Mineral Mouse*, editor Rudy Bland)

rockhound_zack@yahoo.com (*Zack's Rocks and Minerals*, editor Zachary McKinney)



Additional Field Trip Photo's
Submitted by John Haskins, Jack Curtin and Dave Callahan



The workshop at Dave Callahan's included packing over 500 "sluice bags," cutting bookends, slabs, and the newest addition- a series of "sphere" cutters. You can come out to Uncle Billy's Day and see the finished products.



Fluorite on Quartz-
very nice cube
Fantastic find for this
location.



This was the first trip to the Glendon Pyrite Mine is several years, and it seems like attendees had a great time, and were pleased with their finds.

Photographs from the Franklin NJ trip submitted by Jack Curtin.



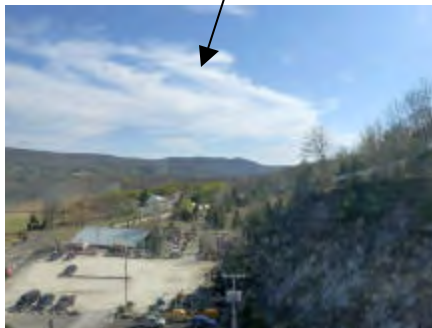
Bernard standing by a case filled with gold specimens.



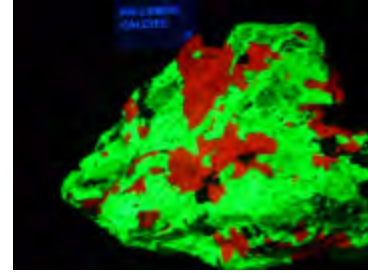
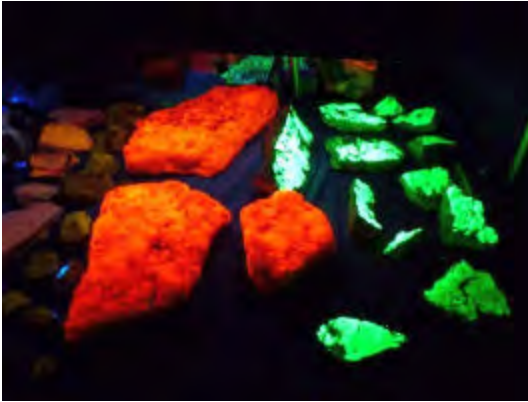
Above and left- sights from in and around the Franklin and Sterling Hill Mining Museums.



View from the upper level walk way



Fluorescent Mineral Specimens from Franklin NJ



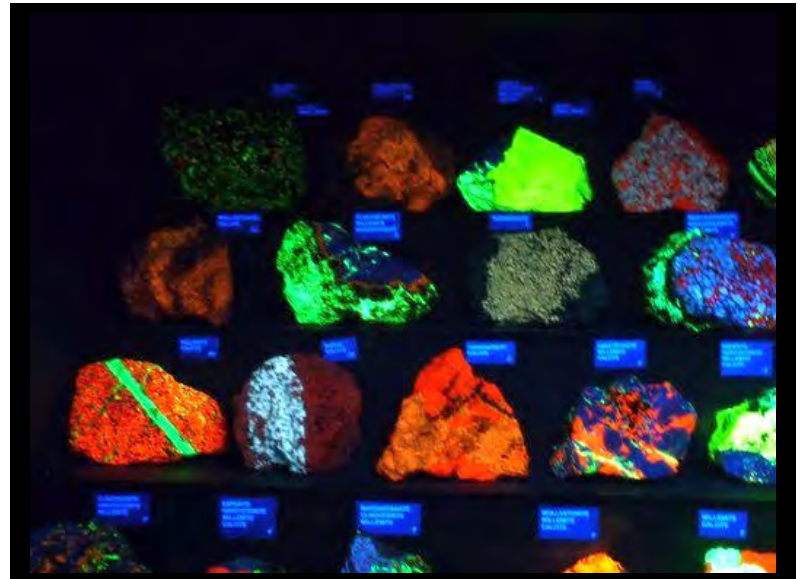
CALCITE

What causes fluorescence in minerals? There is not one cause but many, as the specimens in this case suggest. All of them are the same mineral species—*CALCITE*—but from different localities worldwide. Note the wide range in color of fluorescence.

Calcite is one of the most abundant minerals in the Earth's crust and commonly occurs in fine crystals and large cleavage blocks. The combination of bright fluorescence, easy availability, and astonishing diversity in form makes calcite a popular collector species. Some mineral enthusiasts collect nothing else.

WILLEMITE

Willemite was one of the major ore minerals of zinc at Sterling Hill and Franklin and is prized by mineral collectors for its bright green fluorescence. Geologists used this property of fluorescence in mapping the ore deposit underground and in monitoring the efficiency of the ore-separation process in the mill. Willemite occurs at numerous other localities also, though generally in small amounts. Commonly it is fluorescent. Hues of green, pale yellow, and white dominate, as shown here, but only rarely is the fluorescence as vivid as that of the local material. Red-fluorescing calcite and blue-fluorescing hydrozincite are common associates.



What Makes a Good Fluorescent Mineral Specimen?

You may find some of the answers in this case. All of the specimens shown here would be considered good to excellent by most collectors, and a few are among the finest known of their kind. As you look at these specimens, consider how your perception of beauty is affected by such properties as well-defined crystal form, intriguing specimen shape, attractive color, brightness, bold pattern of fluorescence, zoned fluorescence within single crystals, and presence of more than one fluorescent mineral in the same specimen. Specimens that combine two or more of these properties generally are those most in demand by collectors.