

# GEM & MINERAL JOURNAL

Official Monthly  
Publication of the Gem &  
Mineral Society of  
Lynchburg, VA, Inc  
[www.lynchburgrockclub.org](http://www.lynchburgrockclub.org)

AUGUST 2017

VOLUME 26~ ISSUE 8

## *President's Message:*

Hi All,

I hope you have been enjoying the summer, especially the past few weeks with the humidity being down.

We have started our inventory of the club's assets and have started to make plans for what we should do with the extra equipment that we have. I believe that we can offer some of the equipment up but will have to get a consensus of the executive board as to what, and to what degree we want to let go. While doing the inventory I was able to see just how much area we are taking up, which will in turn allow us to know how much area we will need to be looking for if we ever have to move. Between the equipment and the stock pile of material that we have it is clear that we need to plan now so things do not hit us unexpectedly.

On another note, it is clear that there is a lot of work that needs to be done between now and the next venue that we have which I believe is the Apple Festival in Amherst in the month of October. There is work that only takes one person to do, like sawing which takes time so with a couple of minutes work you have to wait for the rock to be cut. During this time you can do other needed work or work on a project for yourself. As we discussed in an earlier meeting, where we decided to do the two shows in the Fall, we really need help to get stuff ready to sell at these shows. I know of only two members that have showed up as of the writing of this letter and they were a couple. That said let's get out there and get stuff done. There is sawing, grinding, polishing, and bag stuffing so there is something for all to do. You do not have to be skilled in the art of rock just willing to listen and put forth and effort and gain experience.

*Continued on page 11*

---

## *From The First VP:*

For our August meeting we will hold our long awaited live auction. There are many specimens that will be up for grabs by the highest bidder. I suggest that you arrive a bit early to register and receive a bidding paddle, along with a list of potential items to be auctioned off. We will try to keep our business meeting short in order to maximize the amount of time for the auction. In the event that we do not get to all of the items, we will consider another auction at the November meeting. Photos of a few of the items can be found on page 11.

\*\*\*ALL AUCTION ITEMS MUST BE PAID IN FULL THE NIGHT OF THE AUCTION. CASH OR CHECK MADE PAYABLE TO GMSL. THANKS FOR YOUR COOPERATION.\*\*\*

Looking Forward to Seeing You at the August Meeting,  
Natalie



## July Meeting Minutes

**Meeting:** Wednesday, July 19, 2017 @ 7:00 PM

**Attendance:** 52

**Hospitality:** Jean and Frank Midkiff were hosts for the July Meeting, Pamela Matlack - Klein will be our host for August.

**On Time Drawing Winners:** Jack Curtin, Marty Dailey, Lenny Hoffner, Emily Staton, Tim Axley, Sharon Lester, Jessi Ann Parker, Cindy Shields, Abby DeFort, Dave Callahan, Jennifer Staton, Wayne McIntyre, Pamela Matlack-Klein, Harlan Bostic, and Roger Linkenhoker.

**50/50 drawing winner** of \$20.00 was Jean Midkiff

**President -Steve Gordon-** Old Business: Discussed the recent board meeting discussion of strategies for future club member growth. One idea was to have a game like the popular Wheel of Fortune where folks would win rock and mineral prizes. He asked club members to suggest names for this game. Each member can submit up to 5 names for consideration. One name will be chosen. The club will need a new newsletter editor for next year. Please consider volunteering for this important position. Facebook was mentioned as a tool to promote our club. Kate Staton volunteered to help with this endeavor. Steve encouraged everyone to consider helping at the workshops and festivals.

**First V.P. – Natalie Darling** - was unable to attend the meeting.

**Second V.P. Dave Callahan–**  
**Upcoming field trips:** July 22 - Field trip (go on your own) to the Natural History Museum in Martinsville, VA. Afterwards interested members can visit nearby Fairystone State Park. The Fall Apple Festival is October 21-22 in Amherst, VA. Workshop volunteers are needed to prepare clocks, bookends, gem trees, etc. for this and future fundraising.

**Treasurer:** Cindy Mitchell- Not present at the meeting.

**Program:** Tonight's program entitled "Rising Sea Level: Fact or Fiction" was presented by Pamela Matlack-Klein.

Special thanks to Warren Darling for providing silent auction items

**Minutes submitted by Jack Curtin, substituting for Linda Noble, Secretary**



### 2017 ELECTED OFFICERS

**PRESIDENT - Steve Gordon**  
(434) 929-1524  
[stevegordon@comcast.net](mailto:stevegordon@comcast.net)

**First Vice President**  
**Natalie Darling**  
434-941-1899  
[natalie@sterlingflame.com](mailto:natalie@sterlingflame.com)

**Second Vice President**  
**David Callahan**  
(540) 297-1853  
[DBCALL1@aol.com](mailto:DBCALL1@aol.com)

**Secretary**  
**Linda Noble**  
(434) 332-4869  
[linda-noble@hughes.net](mailto:linda-noble@hughes.net)

**Editor - Warren Darling**  
(434) 941-3784  
[darlingwarren@yahoo.com](mailto:darlingwarren@yahoo.com)

**Treasurer - Cindy Mitchell**  
(434) 283-3884  
[mitchell99@embarqmail.com](mailto:mitchell99@embarqmail.com)

**Members At Large-**  
Johnny Knight  
Eric Routon

### COMMITTEE CHAIR PERSONS:

**Field Trips–** David Callahan  
**Hospitality-** Monthly Volunteers  
**News Articles–** Natalie Darling  
**Silent Auction–** Warren Darling  
**Website–** Casper Voogt  
**Workshops–** Dave Callahan  
**FRA Adult Liaison-** OPEN  
**Membership-** Thom Noble  
**Finance Committee-** Natalie Darling



## PROGRAMS

Special thanks to Club Member Pamela Klein, who presented our July Program, on the subject of Rising Sea Levels.

Please join us on Wednesday, August 16 for "Christmas In August"- where we will celebrate with an auction of club acquired specimens and equipment. Family and Friends are welcome to participate as well. There are some beautiful specimens and I am sure you won't want to miss it. Cash or check only- all items must be paid for that night.

### Bench Tips By Brad Smith

See all Brad's jewelry books at  
[Amazon.com/author/BradfordSmith](https://www.amazon.com/author/BradfordSmith)

#### FIND THE BALANCE POINT

With odd-shaped pendants or earrings it's often difficult to find the right place to attach a bail or loop so that the piece is balanced and hangs straight. A quick way to make a tool for this is to modify a set of tweezers. Any set of tweezers will work. Spread the tips, sharpen them with a file, and bend the tips at a right angle to point towards each other. To use the tool suspend the pendant or earring between two sharp points to see how it will hang.



#### DRILL BREAKAGE

Using a small drill is difficult for a beginner, especially if it is hand held in a flexshaft or Dremel. They are easily broken if you push too hard or if you tilt the drill while it's in the hole.

Most problems, however, are the result of buying cheap drills that suffer from poor quality steel or inaccurately ground cutting edges. A good drill from jewelry supply companies is well worth the price.

Remember that drilling always goes easier with lubrication. A little wax or oil is all you need. Almost anything will work - Three and One, beeswax, mineral oil, injection wax, car oil, olive oil, or one of the commercial cutting waxes. The lubricant helps to move chips out of the hole and reduces friction of the drill against the side of the hole, keeping the drill cooler.

## FIELD TRIP REPORT...



### Contact Information

for Field Trips

David Callahan,

Field Trip Chairman

Home phone: 540-297-1853

Cell Phone- 540-874-5201

E-mail [dbcall1@aol.com](mailto:dbcall1@aol.com)

We were not able to line up a field trip for the month of August, so we will plan for an extra Saturday workshop at Dave Callahan's on Saturday, August 26. Hope you can make it.

## Up Coming Field Trips



**OFFICIAL COMBINED MINERAL COLLECTING FIELD TRIP  
THE GEM AND MINERAL SOCIETY OF LYNCHBURG, VA INC. &  
THE ROANOKE VALLEY MINERAL AND GEM SOCIETY INC.**

**KYANITE MINING CORP. DILLWYN, VA. ----- ANNUAL FIELD TRIP**

**WILLIS MOUNTAIN KYANITE MINE**

If the mine is working, we may have to limit our collecting areas.

**September 23, 2017**

**9:00AM to 1 PM**

Sign-up is required, call me, email me or sign-up at the meeting. If you cancel, notify me to be taken off the list as space may be limited due to the expanded list of clubs now participating in this annual event.

All club field trip leaders send me a list of your total collectors so that I can compile a list and forward to the mine management by 9-19-17. There is a limit of 150 collectors from all clubs for this event so there will be room for everyone.

**SAFETY:** Everyone must arrive at the office parking lot no later than 8:30AM to sign the release form and hear the required safety briefing. Each Club field trip leader, or their appointed replacement, will act as safety observer while in the mine and will be expected to be on

the lookout for and correct all safety infractions from any collector from any club. Keep in mind that this site is one of the very few that are still open for collecting. Not obeying all the safety rules will cause this site to be closed to all future collecting.

### **DRIVING FROM THE ROANOKE AND LYNCHBURG**

**AREA:** From Roanoke, follow US 460 East to Lynchburg, to the Sheets Station on US 460 and Rt. 811 in New London. Continue on the US 460 East by-pass around Lynchburg thru Appomattox and take Rt. 24 North to its end at US 60, Mt. Rush. Continue on US 60 East to Sprouses Corner. Turn right on US 15 South and drive 4 miles to Willis Mt. Plant Road. Turn left and stop at the stone mine office. Park out of the way as not to block traffic. Do not park along Rt. 15. Allow 1 1/4 minimum hour driving time from New London west of Lynchburg to the mine office.

Continued on next page





## Up Coming Field Trips

*Continued from page 4*

### **GENERAL LOCATION and ASSEMBLY TIME:**

Everyone will meet at the mine office for sign-in and safety instruction so be there no later than 8:30am. The mine is located north of Farmville, Va. on Rt. 15 North, James Madison Highway. Proceed from US 460 North on Rt. 15 for a little over 12 miles to Willis Mt. Plant Rd. The stone mine office is on the right. If you approach from Rt. 60 at Sprouses Corner, then go south on Rt. 15 for 4 miles to Willis Mt. Plant Rd. and the office will be on your left. Wait in the parking lot and do not block traffic. Many trucks may be using the road. While you're waiting, be sure to enjoy the beautiful blue kyanite bolder in the front yard from the old closed Baker Mountain.

**COLLECTING:** Willis Mountain is what's known as a monadnock. The kyanite exposure resisted weathering and, as the surrounding area was eroded and weathered away, the mountain outcrop was left standing. This is very much like the famous Graves Mountain kyanite mine in Georgia. The center of the mountain has been mostly mined away. We should be able to find plenty of white kyanite blades in the massive kyanite quartzite; pyrite; quartz; hematite with some iridescence, red mica, green mica, apatite and possibly some blue kyanite and pale green trolleite. Some of the white kyanite and quartz here have a beautiful light blue fluorescence and the apatite is yellow so bring your short wave lamp and blackout cloth.

**EQUIPMENT:** The standard quarry safety gear required is a hard hats with a mfg. date of 5 years or less (everyone must have an approved hard hat....no bicycle helmets. Small heads can wear a ball cap under the hard hat), safety glasses, respiratory protection from rock dust you may encounter, a pair of wheel chocks either purchased, home made or even a rock is acceptable. Every time you leave the car, turn off the engine, put in park and apply the hand brake and wheel chocks. ONLY STEEL OR MSHA (Federal Mine Safety

and Health Act) APPROVED REINFORCED FIBERGLASS TOED BOOTS WILL BE ALLOWED, THERE WILL BE NO EXCEPTIONS!!! No low quarters or sneakers even if they have steel or composite toes. If you do not have all the required safety equipment, you will not be allowed to enter the quarry. Also required are long pants, gloves, hammer and chisels, wrapping paper, buckets, water as it is very important to stay hydrated as it may be very hot. If you have any medical condition that would put you in any danger, do not attempt this trip. For your own safety, let your field trip leader or collecting buddy know if you have any medical condition that could be a problem for you. Be prepared for windy, hot or wet weather. We will be on the mountain top and it's always windy. We can drive to the designated collecting area, so hand trucks should not be needed. Bring a camera, as the view is awesome.

**AFTER THE DIG SOCIAL:** This year, the pavilion beside the office will be available immediately after the dig ends at 1PM to relax, cool off eat your lunch. This will also be a social get together so that we can have a chance to become better acquainted with the members of our rock club neighbors and to provide some time to relax before their long ride home. You might want to bring your own lawn chair. There may also be other groups there as invited guests of Kyanite Mining.

**AGE LIMIT:** There is no age limit, but no toddlers please. All children must be signed for, closely supervised by an adult and never left un-attended. They must also have all the required safety equipment. No Exceptions!!! If parents have any questions about what is acceptable for your child, please call me and we will discuss it.

**WEATHER:** The trip will be canceled due to safety concerns in case of hard rain or a thunderstorm. Call to confirm if there is any question. Contact information at the top of page 4.



## Up Coming DMC Field Trip

Continued from page 5

**An Official Field Trip of the Gaston Gem Mineral and Faceter's Club (Gastonia, NC) (HOST)**  
**An Official Field Trip of the Gem and Mineral Society of Lynchburg, VA Inc**  
**Saturday, August 26, 2017 ~ 8:30AM - 4PM Eastern**  
**Propst Farm; Lincoln County, NC**

**Fee: \$25 per person**

**TRIP:** The property recently reopened after several months following the passing of Mrs. Propst. The property has been producing corundum, since the 1960's. Digging will take place in front and behind the barn as well as other possible areas designated by the current owner, Ronald Lineberger.

**COLLECTING:** Some large and unusual corundum specimens have been coming out of the ground recently including a large Kyanite included specimen and a small clear ruby. Good specimens of magnetite and quartz crystals are occasionally found. The ground is hard packed red clay. Digging can be easy or moderately hard depending on the location and depth of the hole you dig.

**BRING:** Long and short shovels and small or large buckets minimum. 1 inch and half inch classifiers, small picks, tarps and probing tools may come in handy. Bring water or soft drinks and snacks. An extra change of clothes may be needed as the ground is red clay.

**FEE:** \$25 per person

**REQUIREMENTS:** All collectors will be required to sign a permission / liability form and pay \$25 before setting up to dig. Digging is allowed in the designated areas only. All holes MUST be filled in before you leave the property.

**SPECIAL CONDITIONS:** Parking is on the grass near the dig area.

**CHILDREN:** Allowed with parental supervision.

**PETS:** Allowed on leash only.

**FACILITIES:** There is no toilet but there is a service station with facilities at the exit of HWY 321 and Startown Road.

**ADDITIONAL INFORMATION:**

**Address:** Propst Farm - 3668 Startown Road, Maiden NC 28650

**Lodging:** Rooms are available in nearby Lincolnton NC or Hickory NC.

**DIRECTIONS AND WHERE TO MEET:**

About 13 miles south of I-40 via US321 and Startown Road

-or-

About 26 miles north of I-85 via US321 and Startown Road

(Startown road intersects 321 and the Propst Farm is approximately 3 miles south of NC highway US 321).

Dig is on residential land, pull in between 2 brick houses - We will have a sign on road where to turn in.

**CONTACT:**

Lorell Dunlap, Field Trip Chair – Gaston Gem Mineral and Faceters club.

Phone: 704-692-1272

E-Mail: [Lorell\\_Dunlap@yahoo.com](mailto:Lorell_Dunlap@yahoo.com)

## A First Look at Chatham Created Diamonds

*From the ISG website 21 July 2017; by way of club member Dave Woolley*

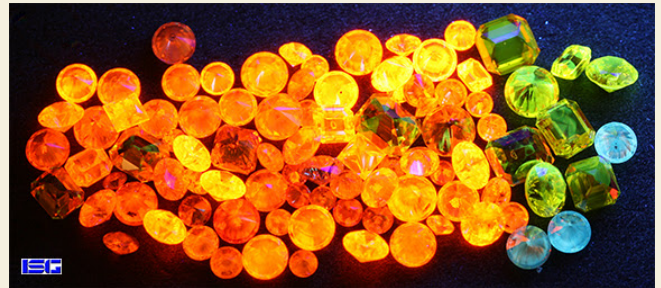
Although it will take a few weeks to get started on the new Lab Created Diamonds Course made available by the amazing donation from Tom Chatham and Chatham Created Gems (seen at left), I could not resist pulling the parcel out last night and just throwing some basic tests on the diamond group. Below are some fun and fast images of what I saw last night before going home. If I had this much fun with just a few minutes of messing around with them, think about how much fun they are going to be when you get to play with them in person in the upcoming classroom edition at the Tucson Gem Shows? For now, let's take a first look at the Chatham Created Diamonds donated for our new course.



Here is a quick look at the parcel. The lighting is sort of bright as I simply used the flash from our Canon Xti SLR, but this was the initial set-up as I wanted to see what this group would do in ultraviolet light.



The brilliant reaction to short-wave was astounding. These early edition lab created Chatham Diamonds promised to be amazing and they did not disappoint. The intensity of the yellows, oranges, greens and blues were indicative of the processes and elements used to create these wonders of nature.



These are not the first diamonds donated to the ISG by Chatham Created Gems. Just over 20 years ago I obtained two yellow created diamonds, some of the first production of true lab created diamonds from Chatham Created Gems. Those specimens have a unique fluorescence pattern that follows the crystal growth structure of the diamond. In one of those there was a very brilliant blue cross pattern that was very easy to see using a short-wave UV light. To see if these offered the same type of structure I used our Meiji Techno microscope, along with a timed exposure of the Canon Xti to image of the diamonds from the new collection (seen at left) under shortwave ultraviolet.



*Continued on page 9*



**UPCOMING EVENTS**

*August 2017*

**Sept. 16:17:** Gem, Mineral & Jewelry Show sponsored by the Central PA Rock & Mineral Club. Zembo Shrine, Third & Division Sts; Harrisburg, PA. Contact: Betsy Oberheim [aoberheim3@comcast.net](mailto:aoberheim3@comcast.net)

**Sept 22-24:** 50th annual SVGMS Club Show and sale. Augusta Expo, 277 Expo Rd., Fishersville, VA Contact: sgregory357@hotmail.com show chair.

**Sept. 16-17-** 49th Annual Gem & Mineral Show & Sale sponsored by the Mid-Hudson Valley Gem & Mineral Society, Golds Gym and Family Sports Center, 258 Titusville Rd; Poughkeepsie, NY Info: Carolyn Reynard [sunstone33@verizon.net](mailto:sunstone33@verizon.net)

**Oct. 21-22-** 45th Annual Gem & Mineral Show and 67th Eastern Federation Convention. Beals Community Center, 240 Stafford Ave, Bristol, Ct. EFMLS Annual Meeting: Friday, October 20.

**November 24-26-** Roanoke Valley Mineral & Gem Society Gem Show and Sale. Also featuring the Lynchburg Gem and Mineral Society World Class Fluorescent Mineral Display. More details to come as to times, cost, etc. Stay Tuned...

SUN	MON	TUES	WED	THURS	FRI	SAT
		1	2	3	4	5
6	7	8	9	10	11	12
13	14	15	16 Meeting 7-9PM	17	18	19
20	21	22	23	24	25	26
27	28	29	30	31		

**REMINDER...**

**Club workshops are held on the second Saturday of each month** at Dave Callahan's home. Workshops are open to members only, and all members are encouraged to attend when possible.

There will be some discussion at this months meeting about possibly offering other days for the workshops also.

This is a great learning & fellowship opportunity, as well as a way to contribute to your club. You can "learn" while helping to fabricate items for sale at our fall festival, then use the equipment available to complete your own personal pieces.

Please consider coming out, regardless of your level of experience. All help is needed and appreciated!



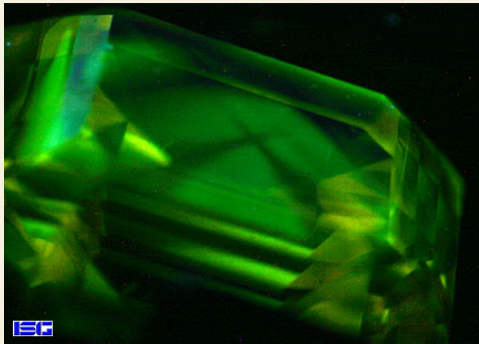


## A First Look at Chatham Created Diamonds

*continued from page 7*

Very difficult to photograph, but the same type of structure can be seen in this specimen from this new group. The blue color is missing but this may be due to several factors involved with photographing diamond reactions in short-wave ultraviolet light.

The inclusions in the diamonds were amazing, but we will allow you to see those first-hand in the upcoming class.



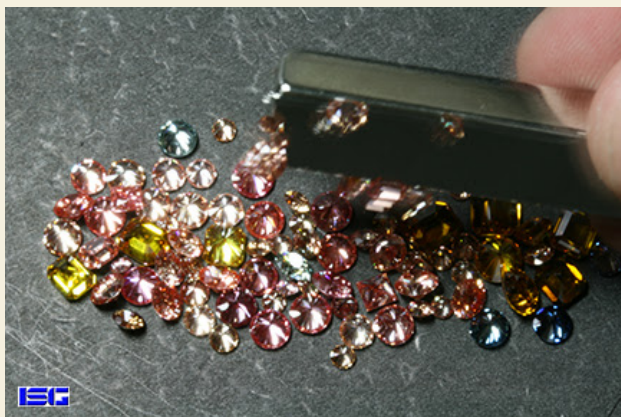
But I could not resist one more quick test....

Our industrial magnet.

As soon as I got the magnet close to the diamond parcel, the diamonds started jumping around like kids at a birthday party. A few even jumped off the table and up to the magnet.

Once again, this was anticipated, but the strong reaction to magnetism was an amazing experience.

Below is one more look.



Here is another magnet sitting up on one end. Some of the diamonds were inert, but many were very strongly attracted...to the point they hung on even when the magnet was set up on its end.



If you think this is fun, wait until you get to play with these yourself in the ISG Created Diamond Course coming first at the Tucson Gem Shows in February 2018. We will offer an online version of this class, but the hands-on practical class will be available for those who would like to get first-hand knowledge and experience with the identification of created diamonds.

We will have more information on that class in the near future. Seats will be limited so you will want to act fast when registration opens. Registered ISG Students and Graduates will get priority registration and special discounts at this upcoming class at the Tucson Gem Shows.

And once again.....this is all being made possible by the generosity and support of Tom Chatham and [Chatham Created Gems](#).

*Continued on next page*

## A First Look at Chatham Created Diamonds

*continued from page 9*

### Thank you to all of our donors and supporters

I also want to thank all of you who have sent in donations to help maintain the operations of the ISG. We are preparing the Tax Deduction Letters to go out to everyone next week. We also have some fun parcels of gemstones going out to a few who participated in our special donor program several weeks ago.

Robert James FGA, GG  
President, International School of Gemology Inc.  
a 501(c)3 Non-Profit Education Organization




We invite you to join the most fun and amazing study of gemology with folks just like you...who love what they do and do what they love. ISG International School of Gemology <https://schoolofgemology.com>

### *Sunshine News*


Jean Midkiff had a fall, but is well on the way to recovery.

Sympathy- Mr. Dixon, Owner of Kyanite Mining passed away on July 24th. Please keep the Dixon family and all of their "Kyanite Mining Family" in your thoughts and prayers.

### *Welcome New Members*



Scott  
Steele from  
Lyndhurst  
VA



Michael, Jennifer, Kate &  
Emily Staton from  
Lynchburg  
VA



## President's Message:

*Continued from page 1*

On a more serious note I want to try and apologize/clear up something that I said at the last meeting. I have been approached by a number of the club members (which I greatly appreciate) who said what they believed I said. At that time I realized that what I thought I said was not what everyone heard. I said that I wanted to get the club started in a different way but not how the club runs or does business but in how we reach out. I was not criticizing how the club was run but that we needed to look at how we reach the public now. I believe the same as most of you and that is the club is where it is today because of the way we have been doing business. We are successful because we believe in what we are doing and we want the craft of rocking to continue. We have not made it this far because we were doing it wrong but

because we were doing it right. With that said, again I want to apologize to any that took what I said the wrong way. I understand that we all interpret things different (something that the kids in soccer showed me) and please come and say something early so that members are not steaming until the next meeting. Call me or write me or talk to me right after the statement was said so we do not loose time allowing it to fester. I do think a long time about what I want to say but me thinking about it does not help as I am the one saying it and I understand myself. I transmit and receive on the same wave length so I rarely catch myself in something that may be interpreted a different way than I intended it to mean.

Until next Time, Keep looking down,  
Steve

### Come One Come All~ You Won't Want to Miss The GMSL Live Auction, Wednesday, August 16th, 7-9PM

Here are a few of the items to be auctioned off. A complete list of numbered items will be available at the meeting prior to the start of the auction. Please arrive a little early to register and preview the items in person. The earlier we get started the more time we will have for the auction. Hope to see you there.





GEM & MINERAL SOCIETY OF LYNCHBURG, VA, INC.

[WWW.LYNCHBURGROCKCLUB.ORG](http://WWW.LYNCHBURGROCKCLUB.ORG)

Warren Darling, Editor  
211 Chesterfield Rd.  
Lynchburg, VA 24502



The purpose of the Gem & Mineral Society of Lynchburg, VA is to promote education in The Earth Sciences, including: Mineralogy, Geology, Gemology, Paleontology, and Crystallography



Lynchburg Rock Raiders is the official Future Rockhounds of America association of the The Gem & Mineral Society of Lynchburg, VA. Inc.

*It's Back To School Time-  
Watch out for children that may  
be waiting for, loading or  
unloading school busses.*



*MEETING LOCATION*

*DIRECTIONS: Fairview Center;  
3621 Campbell Ave., Lynchburg, VA 24501  
434-847-1751~ From Route 29 expressway or Route  
460, take the Campbell Avenue Exit. Follow Campbell  
Ave. to 3621, which is across the street from a Citgo  
Gas Station. There is a fence around the building and  
parking on both streets running along the sides of the  
property as well as a lot in the back. We will be  
looking for you!*