



July Newsletter

7/2023

Volume 2023, Number 7

In This Issue

- [President's Meanderings](#)
- [Programs for the future](#)
- [Note from the Editor](#)
- [Field Trips](#)
- [Note from Membership Chairperson](#)
- [Meeting minutes](#)
- [Interesting Article Every Rock Tells a Story](#)
- [Other Links](#)

Meeting at the
715 Moose Lodge Hall
2307 Lakeside Dr.
Lynchburg, VA 24501
3rd Tuesday of the month
7:00 pm until 9:00 pm.

Wintery weather meetings schedule is if the Lynchburg schools are down for weather then the meeting is cancelled

Workshop is the 2nd Saturday of the month.

President's Meanderings:

By James Tomlin

Hello Everyone,

I would like to take a moment to express my deepest gratitude and appreciation to each and every one of you who volunteered for the gem and mineral show. Your dedication and selflessness have made this event a tremendous success.

I would also like to acknowledge the tireless efforts of our volunteers. Your hard work, enthusiasm, and willingness to lend a hand have been invaluable in ensuring the smooth operation of the event. From setting up the booths, working the sluice, the picker's wheel and assisting visitors. You have been the backbone of this show and I cannot thank you enough for your dedication.

Once again, thank you all for your invaluable contributions, and I look forward to future shows and events where we can continue to celebrate the beauty and marvels of the gem and mineral world.

Thank you all,

James Tomlin
President
Gem and Mineral Society of Lynchburg VA

Members/Volunteers for recognition:

Holly Tomlin, Sydney Tomlin, Rodger Linkenhoker, Nancy Linkenhoker, Thom Noble, Linda Noble, Carl Pilat, Bernard Rivera, Joan Moore, Steve Gordon, Jeff Franklin, Lisa Franklin, Jackie Weizenecker, Dale Weizenecker, Mary Foster, Estelle Brinius, John Haskins, Nona Haskins, Pam Routon, Eric Routon, Robert Seargent.

2023 Officers

PRESIDENT

James Tomlin
(434)258-2886
tomlin.jamesm@yahoo.com

First Vice President

Vacant

Second Vice President

Vacant

Secretary – Holly Tomlin

Fireeyez1981@yahoo.com

Treasurer – Joan Moore

jmoore64@msn.com

Membership – Thom Noble

thom-noble@hughes.net

Editor – Steve Gordon

(434) 942-1836
stevegordon@comcast.net

Members At Large -

Eric Routon

Karina Johnson

Youth Out Reach

Programs for 2023

July's Program will be:

We will be having a show and tell on the rocks and minerals that you may find at the future field trips later on this year. We will have specimens and will talk about what you could find if we do not have a specimen to show.

Note from the Editor

Hello All,

Well we had a great two days at the club show and I hope you made it to the show. We had lots of kids spinning the picker's wheel and also on the sluice. We had more visitors on Friday than we had expected and then Saturday the place was packed a few hours with lulls in between. All and all we had a great turn out and most of the vendors were pleased with the turn out.

I would love some pictures from any of you and about anything to put in the newsletter. I am giving out of my own pictures so please send me some of yours. Or give me something else to put in the place. That would give me some other inspiration and maybe bring joy to others also.

That is all for now,
Steve

Field Trips

Club Field Trips

July 15th

Beckley WV (plant fossil)

Others are still coming in

South Eastern Federation Field Trips (Dixie Mineral)

NOTE: DMC field trips will continue to be planned and scheduled, but may be cancelled or rescheduled pending COVID-19 status. If there are any changes to a trip, all contacts listed for DMC member clubs will be notified via email as soon as possible. The DMC trip schedule page on the SFMS website (<https://www.southeastfed.org/sfms-field-trips/dmc-field-trip-program/dmc-field-trip-schedule>) will also be updated with the current status of trips. **Lori Carter, DMC Coordinator**

July field trip is set for July 22nd

August field trip is set for Aug. 26th

If you did not get the email let me know and I will send it to you.

Membership Report

We are now at 97 individual and family memberships comprised of a total of 180 members. Back a number of years ago we used to recognize the new members in the newsletter when they joined the club. For some reason, we drifted away from doing this. The members of the board discussed this and have decided to reinstate.

I would like to welcome the following new members:

Caleb and Breeanna Knight

Lydia Kalyna

Alfred and Kaylee Mathew

James and Basset

Rhoda Allen

Please make them feel welcome when you see them

For those who joined us this year, I have not had an opportunity to go back through my records to identify who you are. I will get you recognized in the upcoming newsletters. If I overlook you, please let me know so that I can give you the recognition that you deserve.

Thanks,

Thom Noble

Membership Chair

Here are a few things that being a member gives you:

- * receive our monthly newsletters
- * attend our monthly meetings
- * participate in members-only GMSL fieldtrips to quarries, mines, & events related to gems & minerals
- * Purchase club t-shirts or hoodies
- * Discounts with several "rock" stores and vendors for current members with badges
- * attend our club member's only workshop each month
- * A chance to win a \$500 annual scholarship

Thanks,

Thom Noble

Membership Chair

Gem & Mineral Society of Lynchburg Meeting Minutes

June 20, 2023

Attendance: 41 Members, 3 Guests

Meeting Called to Order By: James Tomlin

On Time Drawing Winners: Dale Weizenecker, Jim Hagstrom, Jeff Franklin, Lisa Franklin, John McGee, Alfred M. Kaylee Padgett and Nona Haskins.

50/50 Winner: Jim Hagstrom won \$13.50 and donated \$12.50 back to the club

Old Business: our Mt. Athos trip went really well. We are hoping to plan another one for around October.

We also are working on planning trips to the Claytor Nature Center, JMU and VA Tech. Will have more info on those as they are planned.

We really need someone to take over the club sound system. All it entails is storing it at your house between meetings, bringing it to the meetings and plugging it in. Bill Livingston has graciously done this for years and now it is time to pass the torch. It is currently at our house and we unfortunately do not have the space to store it and we already are responsible for bringing tons of items to the meetings each month. If you are willing to take over the sound system just let me know and I will get it to you.

If you are interested in a board position just let anyone on the board know. We currently have first and second vice president available and just need people to fill it.

New Business: Our July show is coming up and we need volunteers to help run it!! Sign-up sheets are up front. We have already sold out of tables and it's going to be a very busy show. Things run smooth when have plenty of help running it!

Nancy thanks everyone that came out to the workshop to help pack bags for the pickers wheel.

Special: The Board recognized James for all his hard work and dedication to the club as club president and gifted him with a \$500 scholarship to William Holland

Treasurer's Report: We began with \$13, 017.69 and ended with \$13,287.59

Program: Jennifer K. Willis have a presentation on the Claytor Nature Center and all it has to offer.

Executive Board Meeting
No July Executive Board meeting

GMSL2307 July Every Rock Tells a Story - Greenstone

By - SJBoylan20230522

In Bulletin 74, by author W. R. Brown, year 1958, the quadrangle map shows greenstone in the north east side of the map in the area of Mt. Athos, Campbell County, Virginia.

Greenstone is a rock. Greenstone is a field term to describe certain rocks in general. More specific names are also used instead of greenstone. The Audubon Field Guide describes greenstone as a metamorphic rock resulting from regional metamorphism. The mineral constituents of greenstone are given as chlorite, epidote, actinolite and feldspar (albite).

Chlorite is a mineral with a green color. Chlorite is a phyllosilicate. In phyllosilicates, the silicate tetrahedrons share three oxygen atoms to form a sheet structure. Epidote is a mineral with a yellowish green color similar to pistachio nuts. Epidote is a sorosilicate. In sorosilicates, two silicon-oxygen tetrahedrons are linked by sharing one oxygen. Actinolite is a mineral with a dark black color. Actinolite is an inosilicate. In inosilicates, the silicate tetrahedrons join together to form chains. Feldspar is a series of minerals from sodium aluminum silicate to calcium aluminum silicate. In the series the amounts of sodium and calcium change. Feldspar (albite) is the mineral at the sodium rich end of the series. Feldspar can be white. These colors are some of the typical colors for these minerals.

The pictures show rocks identified as a greenstone from Mt. Athos quarry, Virginia. Other names are also used instead of greenstone. Try these questions. What are the four minerals of greenstone? Chlorite, epidote, actinolite and feldspar. What type of rock is greenstone?

Metamorphic. What color is epidote? Yellowish green. What color is the actinolite? Typically dark black. What color is chlorite? Green.



Other Links that you may want to check out:

Mineral Cleaning for Amateurs

John's website is full of information that all mineral collectors will find useful and interesting.
<http://www.johnbetts-fineminerals.com/>

Morefield Mine Tour:

<https://www.youtube.com/watch?v=u5aQp57HMso>

Impromptu lecture on crystallography:

The crystallography talk can be found in the You Tube videos at https://youtu.be/sTtxMrh9_QI, or copy and paste in your browser: Crystallography by Dave Woolley.

Rock collecting guide for geology beginners

<https://www.basementguides.com/rock-collecting-and-geology-basics/>

Facebook Link for the club

<https://www.facebook.com/groups/432839874271992/?ref=share>

Link to Mindat web page for Willis Mountain

[Willis Mountain Mine, Sprouses Corner, Farmville Mining District, Buckingham Co., Virginia, USA \(mindat.org\)](http://mindat.org)

If you need to renew your club membership you can let me or Thom Noble know and we can email you the form. You can make checks out to GMSL.

Our Mailing address is:

The Gem and Mineral Society of Lynchburg, VA, INC.

PO Box 11975

Lynchburg, VA 24506-1975

lynchburgrockclub@yahoo.com

The Gem and Mineral Society of Lynchburg, VA, INC.

PO Box 11975, Lynchburg, VA 24506-1975

Membership Application



This form is also downloadable from our website www.lynchburgrockclub.org

I/We wish to apply for membership in The Gem and Mineral Society of Lynchburg, VA, Inc. ("GMSL") and agree to abide by the Society's By-laws.

New membership Renewal **Check One**

New Membership Renewal

If Renewal: Please check box above if any contact information has changed

Please PRINT all information and write names as you would like them to be shown on your membership badge.

Applicant(s): _____ Today's date: _____

Mr. / Ms. _____ [Primary **voting** Membership]

Spouse / Partner: _____ [Additional **voting** Membership]

Street Address (required): _____

City/Town: _____ State: _____ ZIP: _____

Phone #1: () _____ #2 () _____ E-mail: _____

We will email you our monthly GMSL Newsletters & Field Trip notices (we will not share your information with outsiders)

Minor Dependents: _____ (Secondary Memberships, **non-voting**)

Membership Fees: _____ Covers through December 31st this year

SINGLE: 1 adult, 18 years & over \$15.00 \$ _____

OR

FAMILY: Up to 2 adults and minor dependents \$25.00 \$ _____

Payment by check preferred! Check # _____ Cash _____ Total \$ _____

Make check payable to "The Gem and Mineral Society of Lynchburg, VA, Inc." or "GMSL" and mail completed application form and dues to: GMSL PO Box 11975, Lynchburg, VA 24506-1975, (or bring membership application & dues to our monthly meeting). Note: There is a limit of 2 primary "voting" memberships per family. All membership dues must be renewed between January 1st thru 15th annually to continue with GMSL. If you pay dues by check, allow us 2 – 4 weeks to cash your check, however, your new membership badge(s) should arrive by mail within 2 weeks of paying.

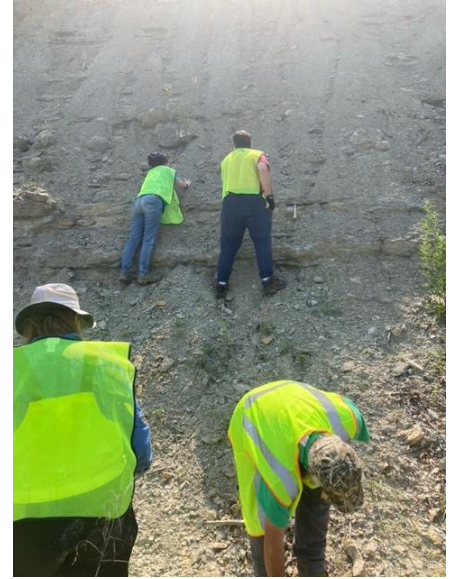
Pictures from the Kentucky trip



Geodes in the creek



Fossils on the roadside



Looking for Honey Comb Coral and Horn Coral

Pictures from the July Show



Roger Demonstrating Cabbing



Sluice workers and some participants



Front desk workers and Picker's wheel



A show of the sales floor