



Gem & Mineral Journal



The Official Publication of The Gem and Mineral Society of Lynchburg, VA Inc.

October 2008

Volume 17 Issue 10

President's Message:

Hello To All,

What a great time of year to go on a field trip. The cooler weather makes it just right. Speaking of field trips, our trip to Boxley Quarry at Mt. Athos on Saturday the 20th of September was highlighted with a new mineral find for that quarry. John Hatcher, a club member of a few years now, made a find on the second level of the quarry that I couldn't readily identify. We made our way back to the area and found some more specimens of what has now been identified as Schorl Tourmaline. All of what we found were small needle like crystals formed into fan shaped masses. Also Natalie Darling and Allen Rice found some larger single crystals in matrix. We just got there on the right day. Good job rock hounds.

This is going to be a busy month. Remember the Club's Annual Auction is the October 15th program. We are asking everyone to bring in a specimen that will be auctioned off, and remember to bring your family and friends to bid on the rock related items. This event has been a good fundraiser for the club in years past and some nice specimens have been added to collections as a result.

We will have the sign up sheet at the meeting for the volunteers to take part in the Apple Harvest Festival at the Amherst County High School on October the 18-19th. I hope you all can attend, as this

has been a fun and profitable event in the past. We have made a few pair of very nice bookends of soapstone and travertine to add to our sale items this year. I hope to see you on October 15th - auction night.

Keep Looking Down,
John Haskins



GMSL President John Haskins and Club member John Hatcher examine a find which turned out to be Schorl tourmaline, a new find for this location.

From the First VP:

NO ARTICLE SUBMITTED

2007 ELECTED OFFICERS**John Haskins - PRESIDENT**

(434) 525-8430

JMHaskins1@netzero.net**Steve Boylan****First Vice President**

(434) 534-6108

boylansj@yahoo.com**David Callahan****Second Vice President**

(540) 297-1853

DBCALL1@aol.com**Dee Tinsley- Secretary**

(434) 221-0864

FlyDeeTin@gmail.com**Natalie Darling - Editor**

(434) 941-1899

gmsleditor@comcast.net**Frank Midkiff- Treasurer**

(434) 239-8329

midkiff@aol.com**Members At Large-**

JoAnn Mason &

Tom Powers

COMMITTEE**CHAIR PERSONS:****Field Trips-** David Callahan**Hospitality-** Anne Torning**News Articles-** Natalie Darling**Silent Auction-** Warren Darling**Special Events-** Dee Tinsley**Swap for Rocks-** Frank Midkiff &
Warren Darling**Website-** Adelaide Le**Workshops-** Dave Woolley**FRA Adult Liaison-** David
Murphy

September Meeting Minutes

Meeting: Wednesday, September 17, 2008**Attendance:** 42**Hospitality:** Ann Torning, Nell McIntyre and others.**Treasures Report:** Frank Midkiff Reported a balance of \$1251.18.**On Time Drawing:** Natalie Darling, Jean Midkiff and Bruce were lucky winners.**Old Business:** Sign up sheet is on stage for all who wish more T-shirts. Another sign up sheet was also there for volunteers to help with set up, manning the booth and take down at the Apple Festival on October 18th & 19th.**First Vice President:** Tonight was collector's night and the members enjoyed all of the displays. October will be our Auction night and everyone is encouraged to bring a specimen to donate to the auction. November is still open and our Christmas Dinner will be in December**Second Vice President:** Dave Callahan gave a run down on the upcoming field trips: 9/20: Mt. Athos; 9/27: Faber Lead mine; 10/25: Willis Mt and in Nov. we will try to go to West VA to collect plant fossils.The Roanoke Show is the 28th, 29th and the 30th of November.

Volunteers will be needed for the fluorescent booth that our club is responsible for.

New Business: JMU donated a Lapidary Unit to our club. John brought several brochures

from the Division of Mines and Minerals in Charlottesville for anyone who wanted them.

Dave Woolley has additional printouts on his last 10-minute talk about Carbonate Minerals if anyone wishes to get one.

Program: Collectors Night. Before Collectors night began we enjoyed our 10-minute talk from Jeff Garcia, who brought in an Amethyst Crystal that is huge. The crystal is currently on display at Easter Island. If you didn't see it at the meeting you can see it there. This crystal has been in his family for generations. It seems Dr. Winkcliffe decided to build a mill in the early 30's in Brookneal near the Falling River. Later he decided to make it a hydroelectric mill and power plant. In doing the excavation he discovered this beautiful Amethyst crystal, and although there were no additional crystals found, Mr. Garcia has fond memories of his great Aunt using it as a door stop in her house when he was a child.

Evan Junker, a representative from Boxley came to let us know they are attempting to start another Boxley Quarry in Campbell County. There is much opposition and he asked for the club's support in the form signing a petition or a 10 second video. The meeting adjourned and "collector's night" was enjoyed by all.

*Respectfully Submitted:
Dee Tinsley Sect.*

The purpose of the Gem & Mineral Society of Lynchburg, VA, INC. is to promote education in The Earth Sciences including: Mineralogy, Geology, Gemology, Paleontology, and Crystallography

*The Gem and Mineral Society of Lynchburg VA, Inc.
Meets on the third Wednesday of each month,
From 7:00pm- 9:00pm
In the auditorium of the Parks and Recreation Building
301 Grove St. Lynchburg, VA 24501
Public is invited, Please join us!*

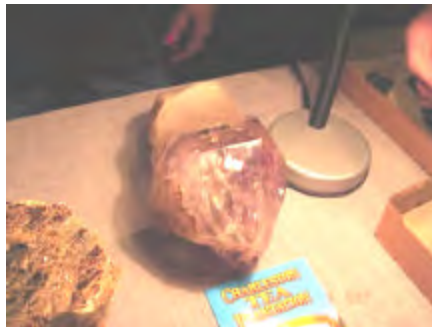
Programs

September 17th, 2008-

Collectors Night Extraordinaire!

A grand showing of collected gems, fossils, minerals and micro mounts was presented for all to enjoy.

Photographs submitted by Dee Tinsley.



Left: Amethyst crystal found near Brookneal in the 1930's.

Right and above: specimens displayed by Dee Tinsley for our collectors night program.



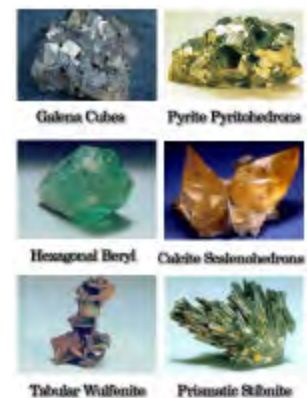
GMSL Annual Auction

WHEN: October 15th, 2008- 7:00-9:00 PM
(Immediately following a brief business meeting).



WHERE: Department of Parks and Recreation Auditorium, 301 Grove St, Lynchburg, VA. Everyone is encouraged to bring your hobby related donations, (specimens, tools, lapidary items, jewelry, etc.) which will be auctioned off to the highest bidder as a fundraiser for our club treasury. (This is how we are able to purchase new saws, faceting machines, and other hobby related materials for our members use.)

Bring your family and friends- everyone will have the opportunity to take home some special items at a great price. Fun is sure to be had by all who attend.



Field Trip Report

Field Trip Report and photographs submitted by
Dave Callahan, field trip chairman.

BOXLEY AGGREGATES MT. ATHOS QUARRY SEPTEMBER 20, 2008

A beautiful day, a tremendous crowd and a new mineral found at this facility. What else could you ask for? Talk about a crowd, this by far was our largest combined club event ever. There were 49 who showed up bright and early on this beautiful Saturday morning. The sun was shining, the humidity was low and our spirits were high.

Superintendent, Elisha Hall, reviewed the safety practices and told us about some potentially hazardous areas that he had coned off. We all read and signed the hazard training form and were ready to enter the quarry promptly at 8AM.

Almost everyone started in the lower level and worked up to the higher benches as the morning progressed. There was much rock around to search thru and recent rains had washed off all the dust.

The new mineral we found here this day was black schorl tourmaline. It's a rather common mineral, but, to my knowledge, it had not been previously reported here. Several of us tentatively identified the small 1/16" to 1/8" diameter by 1-inch long crystals in a light smokey quartz matrix. The triangular cross-section and side striations made it the obvious choice. Several other people located some glassy black sprays that were more difficult to identify. John Haskins took a sample to JMU and Dr. Kearns identified it as tourmaline thru his X-ray Diffraction analysis.

Also found was ilmenite, feldspar, epidote, calcite, pink marble, pyrite, magnetite, quartz, chalcopyrite, bornite, malachite, sphene and actinolite in varying amounts. Many tons of yard rocks were loaded up to beautify those rock gardens at home.

I believe that everyone was pleased with their finds, based on the comments I heard and the loads I observed leaving the quarry. The Mt. Athos quarry is the most productive collecting site in this area. As they continue to expand and deepen the quarry, we expect to keep finding new and exciting rocks and minerals.



Elisha Hall addressed the group prior to entering the quarry. Elisha is a fabulous host each and every time we visit.





Faber Mine Field Trip Report

Field trip
Chairman Dave
Callahan,
Photo by Zachary
McKinney



September 27, 2008 The Faber Mine, a little bit of history and a lot of fun

By Dave Callahan

The Faber Mine is an old, historic, Civil War lead mine with a lot of history. It is nestled in a heavily wooded area, a mile and a half down the old mine road from State Route 6 in southwestern Albemarle County, Virginia.

On this cool and overcast Saturday, eighteen hearty members from the Lynchburg Gem and Mineral Society and the Roanoke Valley Mineral and Gem Society gathered at the last of three assembly areas on US 29 and RT 6 to determine if it would be necessary to leave some cars here and carpool to the site. As it turned out, the small roadside parking area at the mine road could just barely handle our nine cars. The weather forecast for this day called for scattered showers, so fifteen members cancelled. Had they attended, we would have carpooled, as the site can safely handle no more than ten cars.

We unloaded our collecting gear and prepared for the forty-five minute walk to the mine. Some chose to carry buckets, some chose backpacks and some chose hand trucks or a combination of all three. I have found out over the many years of collecting here, that lead is heavy, and a light hand truck with buckets secured with lots of bungee cords works best for me.

After a group photo, we started our journey to the mine. The kids, of course, wanted to lead and explore the new and exciting territory ahead. At each side road, and there were several due to recent logging activities in the area, the group waited for us old guys bringing up the rear. Red flagging was hung from tree branches along the way to keep people on the trail on the way out. The walk to the mine is about one and half miles, and the mostly level mine road meanders from Albemarle County into Nelson County and back into Albemarle County.

Along the way, you will pass many interesting trees in the forest. The most prevalent are the Red, White and Chestnut Oak, Poplar, Maple and Ash. We have found over the years, a few Morrell mushrooms and lots of tasty blueberries that the deer and turkeys feed on.

I understand from talking to some old-timers, many years ago, when the old Route 6 was a stage coach road to Richmond, there was a hotel off to the east side of the mine road. As you enter the property today, there are the remnants of the old road leading down to the old hotel site. I've never been there, but I understand that the foundation remains can still be seen. All of this property is private and posted and no trespassing is allowed except with the express written permission of the landowner and the hunt club that leases it.



Continued on page 10



For further information on field trips, contact David Callahan, 540-297-1853
Email dbc1@aol.com

NOVEMBER FIELD TRIP

I am trying to line up the Boxley Quarry in Beckley, WV for November 22nd. Keep this date open if you are interested in collecting at this excellent plant fossil site.

More news to follow by broadcast, newsletter, website and at the November meeting.

DMC Program of the SFMS Field Trip Committee

An Official Field Trip of Carroll County Gem & Mineral Society NOVEMBER FIELD TRIP – HOGG MINE, LAGRANGE, GEORGIA – FEE SITE

Saturday – November 1, 2008

WHERE: The Famous Hogg Mine outside LaGrange, in Troup County, GA

WHEN: Saturday – November 1, 2008

COLLECTING: Rose quartz, tourmaline, beryl, mica books, & quartz crystal. The Rose Quartz will star if cut correctly, and some of the beryl can be gemmy Aquamarine.

TIME: Sign-in is from 8:30 to 9:30 at Smiths Corner Store – 1231 Bartley Road – LaGrange (gps 32 57.296'n 85 1.130'w) Dig is from 10:00 am – 4:00 pm. You will be required to sign a waiver of liability you must have a ticket before you can enter the mine.

FEE: Adults - \$ 17.00 & children under 18 are free. (Regular fee is \$35.00)

WHAT TO BRING: Pick, shovel, rock hammer, chisels, scratching tools, screen, buckets, gloves, and of course plenty of water. We have been lucky and had beautiful weather in November, but extra clothes and boots might be useful if it's muddy or the weather turns.

GENERAL INFORMATION: There is a Port-a- Potty on site. Pets are welcome if on a leash. There will be a hospitality booth with hot coffee and water. Delicious BBQ plates will be for sale. There will be an area for "Rock Swap and Shop" with vendors. If you forget something, please check at Smith's Corner Store – they have supplies, snacks, drinks, etc

WHERE TO STAY: Nearby LaGrange, GA offers many hotel choices. Camper type vehicles can stay at the store free of charge but there are no hook-ups. People that want to sleep in cars are welcome in the parking lot as well. Tent campers can make prior arrangements to camp for \$9 per night at the site for primitive camping. Local state parks offer a full range of camping options.

DIRECTIONS: **From Atlanta**, take I-85 south to LaGrange. Get off on Hwy. 219 also Whitesville Road (Exit 13) and go south (left) about 2.2 miles from I-85. We will be meeting at Smith's Corner Store (The Citgo on the Left) at the intersection at Whitesville Rd. and Bartley Rd. **From Carrollton**, take Hwy 27 S. (past Wal-Mart). Go thru Franklin to LaGrange. Just stay straight and Hwy 27 dumps into Hwy 219. Take Hwy 219 south and cross I-85. Allow 1 hour & 15 min from Atlanta at I-285 and I-85 connection on the South side.

CONTACTS: The site manager is Rodney Moore. Please follow the Code of Ethics to preserve our relationship with our host. For more directions and info on other collecting sites in the area, check out www.dixieuhedrals.net

Trip Chairman: Bill Mayer – orebilly@gmail.com or 678-423-8936 or 706-319-7022

IMPORTANT

"DMC Field trips are open to all members of associated clubs of the DMC program of the SFMS Field Trip Committee and to all members of SFMS member clubs who have provided their membership with SFMS liability insurance. Because of insurance requirements, members of the GENERAL PUBLIC are NOT invited on this or any DMC program field trips!"

DMC Program / SFMS Field Trip committee's purpose:
To collect field trip information from it's member societies;
schedule and coordinate field trip dates;
disseminate field trip information to all member clubs so that each member society may publish this information as one of their "official" scheduled field trips.

A note from Dave Callahan concerning Club T-Shirt orders:
 The Tee Shirts ordered at the September meeting will be ready at the October 15th meeting. Please have the correct change or a check made out to me as I have pre-paid for them.

The cost is as follows:

S, M, L: \$7.00 each

XXL: \$9.00 each

XL Long-sleeved: \$9.00 each

Thank you for your cooperation.

Welcome New Members:



Sunshine News

Please keep Franklin Midkiff & Dave Woolley in your thoughts and prayers as they recover from recent surgeries.



Dan & Sandra
Peters from
Chesapeake, VA

Tom, Travis, &
Tyler Conner
from Scottsburg
VA

Tom Davis
from Forest,
VA

Marcus & Corinna
Ross from
Lynchburg, VA

Phyllis
Everett from
Evington, VA

George Crowel
from Danville, VA



Schedule of Events

October 2008

SHOWS & TRIPS

Oct. 18th & 19th-56th annual Gem show; Bristol Gem and Mineral Club, Beals Community Center, Bristol, CT.

Oct. 18th & 19th- 34th annual Gem and Mineral Show; Kanawa Rock & Gem Club. South Charleston Community Center, South Charleston WV.

Oct. 24th-26th- Treasures of the Earth Gem, Mineral and Jewelry show; Harrisonburg, VA. Rockingham County Fairgrounds Community Exhibits Building. Visit www.toteshows.com for details.

Oct. 31st-Nov 2nd- Treasures of the Earth Gem, Mineral and Jewelry show; Martinsville, VA. National Guard Armory. Visit www.toteshows.com for details.

Nov. 14th-16th- 7th annual Charlottesville, VA Treasures of the Earth Gem, Mineral and Jewelry show; Charlottesville National Guard Armory, 1640 Avon St. Extension, C'ville, VA. Visit www.toteshows.com for details.

Nov. 28-30th~RVMGS annual Gem Show at the Salem Civic Center

Sun	Mon	Tues	Wed	Thurs	Fri	Sat
			1	2	3	4
5	6	7	8	9	10	11
12	13	14	Auction Meeting 7 PM	16	17	18 Apple Festival
19 Apple Festival	20	21	22 Woolleys Workshop 7 PM	23	24	25
26	27	28	29	30	31 Happy Halloween	

PROGRAM

October: GMSL Annual Auction

November: Open

December: Covered Dish
Holiday Celebration



Attention All Members:

We are currently seeking nominations for officers to serve on the board for the coming year. If you are interested, or have any suggestions for someone you would like us to consider for a position, please let your voice be heard by speaking with one of the officers at this months meeting.

**No Executive
Committee
Meeting In October**



Rock Raiders

Halloween Fun Word Search

- bat
- black
- broom
- cat
- costumes
- ghosts
- halloween
- hoot
- monster
- moon
- mummy
- night
- owl
- pumpkin
- scare
- skeleton
- spider
- spirits
- spooky
- vampire
- witch

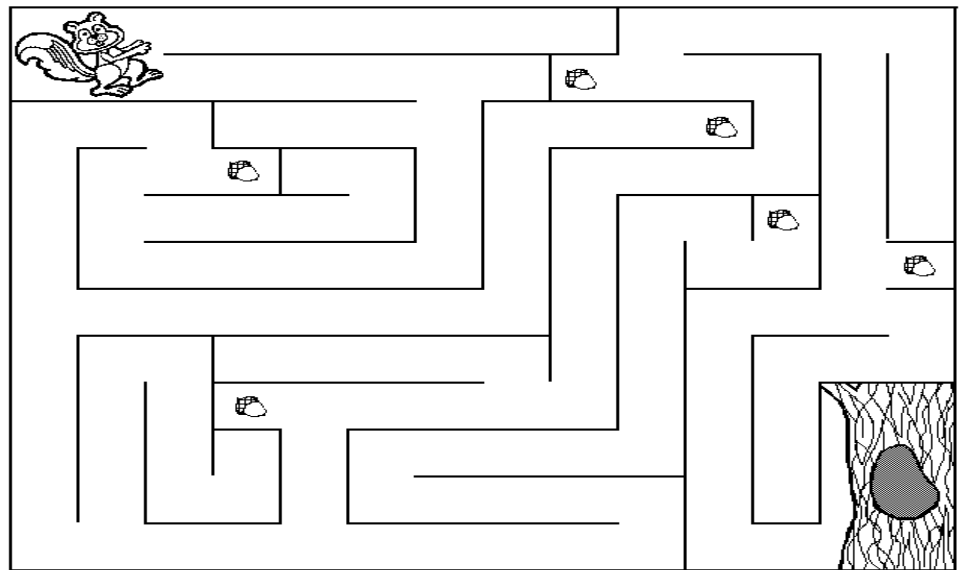
g h o s t s b a t n t
 b o l h s p o o k y p
 v o b a w i t c h o u
 a t l l b r o o m w m
 m q a l n i g h t l p
 p j c o s t u m e s k
 i n k w a s c a t p i
 r s k e l e t o n i n
 e j e e m u m m y d f
 i m o n s t e r q e v
 m o o n o e s c a r e



©1998 The Kid's Domain www.kidsdomain.com
 free for non-profit use

Mission Statement

Future Rockhounds of America is a nationwide nonprofit program within the American Federation of Mineralogical Societies that develops and delivers quality youth activities in the earth sciences and lapidary arts in a fun, family environment. Our underlying goals are to foster science literacy and arts education through structured activities that are engaging and challenging and by which kids- and the adults who mentor them- learn while having fun.



Collect the acorns and take them home

©1998 The Kid's Domain www.kidsdomain.com
 free for non-profit use

Mohs Relative Hardness Scale (top), Rosiwal's Absolute Hardness Scale (bottom)



Field Trip Report

Continued from page 5

As you approach the mine, you will see off to the right, a small rock and earthen dam that was a holding pond. On the hillside, there is also faintly visible the stone foundations of buildings that at one time were the processing plant and mill. To the left, you will see the remains of the crusher pad and the stonework that surrounded it. The mine road continues up the hill a few hundred feet more until it connects with the old Civilian Conservation Corps road that runs along Shiloh Mountain. The CCC was a work relief program for young unemployed men, established in 1933 by President Franklin Roosevelt to combat unemployment during the Great Depression.



The old cut to the adit is now slumped and only a small opening remains exposing the roof of the mine. Sue, one of the Lynchburg Club members, visited the mine some 23 years ago and had some Polaroid pictures she took inside the mine. The portal had not collapsed at that time and she was able to enter a short way. She recalls that she waded in waist deep very cold water and there were bats everywhere.

The pounding of hammers echoed throughout the hills as folks broke open any rock showing any sign of the ore vein. Some of the readily identifiable minerals we found were Galena, (silvery metallic color), Sphalerite, (dark reddish brown and glassy), Fluorite, (purple and white), Pyrite, Chalcopyrite, Calcite and Quartz. Also reported to occur here are Argentiferous Galena, (contains Silver), Pyrrhotite, Magnetite, Cerussite, Pyromorphite, Hydrozincite, (fluoresces blue under short wave lamp), Smithsonite, Antimony, Arsenic, Azurite, Malachite, (alteration of the Chalcopyrite) and Silver. Some of these occurrences are very small and were discovered during the active mining period.

The first discovery of lead and zinc ores in Albemarle County was made in 1849 by an old gentleman named Burford. He found a rock containing what he thought was lead ore on the surface of his property, which occupied the eastern slope of Butler's Mountain, two miles northwest of Faber, a station on the Southern Railway. He took the ore to Faber's Mill, (now Faber,) and had Mr. William Faber try to melt it in his blacksmith's forge. Messrs William Faber and Nicholas L. Martin purchased the property from Mr. Burford and opened the mine in a crude way using their farm hands. They were able to sufficiently develop the vein to sell it at a good profit to a northern party who, it is claimed, removed a good quantity of lead ore. The ore was shipped to New York for smelting and it was said to contain some silver, as high as 31 ounces per ton. The owners failed to meet some of the deferred payments so it was sold back to the first party.

The Confederates worked the mine during the Civil War (1861-1865) and it was claimed that their government paid a royalty on 7,204 pounds of lead mined. The Confederates were working when General Sheridan crossed the Blue Ridge at Rockfish Gap, and work was abandoned during the raid. The mine remained closed until 1905 when it was sold to a party of Philadelphia capitalists who operated it under the title of the Albemarle Zinc and Lead Company. The Company built an 80-ton capacity per 24-hour concentrating plant to produce both lead and zinc. There were 8 sets of dry jigs; crusher, dryer, rolls, screens and steam power of sufficient horsepower for operating the entire plant, including hoist, tram-cars, and cable for conveying the ore from the shaft to the mill. Compressed air drills were used in the underground mining.

The dry process for separating the ore is employed in milling, which differs essentially from the wet process in the form of jig used. The Krom (or Crum) jig is used, made of screens of different size meshes, substituting air for water. These can be set to 700 puffs of air per minute. At the Albemarle plant, the ore was crushed and sized to pass thru a 16-mesh screen. All the ore above this size is passed back to the rolls

Continued on next page

Faber Mine...continued from page 10

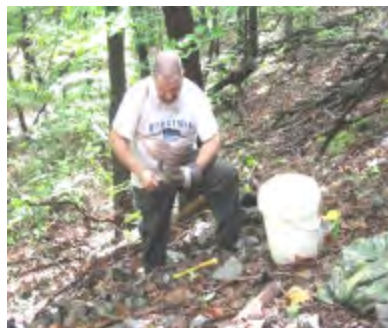
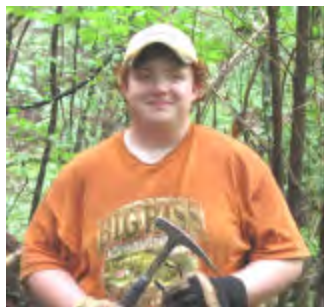
and crushed until properly sized. The ore goes then to 4 rough jigs, and from there to 4 finishing jigs. It was claimed that the tailings were practically free from all ore by this process. Any water used in the process was pumped from the spring-fed holding pond.

Prior to this date, the mine had been worked entirely for lead. The ore values reported by Watson (1907) were varied depending on the sample analyzed, but a random sample submitted to Mr. Watson was Lead---63.05%, Zinc---12.12%, Iron---3.16%, Copper---Trace, Sulphur---19.32%, Calcium fluoride---1.13%, Insoluble residue---1.08%.

It is not clear how long the Albemarle Zinc and Lead Company operated the mine, but in 1915 the Atlantic Lead and Zinc Company reopened the mine. Development work was carried on during 1916. A 100-ton per 2-hour concentrating mill was constructed, but the mine again closed down between 1916 and 1919. From the end of June to the middle of August 1958, some feasibility survey work was done, several drill holes were sunk and the adit was opened but it is now caved.

The main developments comprise 3 shafts sunk respectively to depths of 25, 50 and 120 feet and separated by a distance of about 1,000 feet between the two extreme shafts. In addition to the three shafts, an adit level has been cut into the ridge from the valley bottom and a crosscut runs from the adit on and along the vein for a distance of 140 feet. The rock in which the lead and zinc ores occur are metamorphosed crystalline schists, cut by a series of basic igneous rocks of the diorite and diabase types. The vein is traced for a distance of several miles. It is of variable width, with an average of 4 feet; the strike is north 45 degrees east, exactly paralleling the diorite dike 25 feet distance on the northwest side. The dip is 80 to 85 degrees northwest. The vein is lenticular, composed of bulbous bodies of fluor spar mixed with some quartz, through which the ore, blende (sphalerite) and galena is distributed. Most of the mineralization is in the fluor spar (fluorite) lenses, although the schists next to the lense is often mineralized. The principal gangue mineral is fluor spar. Gangue is the commercially worthless mineral matter associated with economically valuable metallic minerals in a deposit.

It's hard to visualize today all the activities that took place over the past 160 years in this very small, peaceful mountain valley. Some of the remnants and stonework still stand; others are lost in history and reclaimed by vegetation and topsoil. We will look forward to a return trip in the spring after hunting season. The collecting opportunities are unique; the vein material in the dumps is rather sparse as the mine operators did a good job of processing all the valuable rich ore vein material. About all that remains are small Galena and Sphalerite streaks running thru the white and occasionally purple Fluorite. They make very nice specimens of unusual minerals for this part of Virginia.



Photographs submitted by Dave Callahan and Zachary McKinney

Additional pictures on page 13 for electronic viewers.

References:

- Watson, L.W. 1905, *Lead and Zinc Deposits of Virginia, Geological Series, Bulletin No. 1*
 Watson, L.W. 1907, *Mineral Resources of Virginia, The Virginia Jamestown Exposition Commission*
 Sweet, P.C., Good, R.S., Lovett, J.A., Campbell, E.V., Wilkes, G. P., Myers, L.L., 1989, *Copper, Lead, and Zinc Resources in Virginia, Publication 93 Nm.*

Websites to visit: Lynchburg Gem and Mineral Society:

www.lynchburgrockclub.org

The SFMS Newsletter, the Eastern Federation
Newsletter, and the

AFMS Newsletters are available for all members
to read on line at the Federation Websites:

www.amfed.org/sfms, www.amfed.org and
www.amfed.org/efmls

Hobby Related Newsletters are available free of
charge by emailing the editors below. Both are great
sources of information and worth checking out.

(Available only via email)

rudybland@worldnet.att.net (*Mineral Mouse, editor
Rudy Bland*)

rockhound_zack@yahoo.com (*Zack's Rocks and
Minerals, editor Zachary McKinney*)



The Gem & Mineral Society of Lynchburg, VA Inc.

Natalie Darling, Editor

211 Chesterfield Rd.

Lynchburg, VA 24502 www.lynchburgrockclub.org

The purpose of the
Gem & Mineral
Society of Lynchburg,
INC. is to promote
education in The
Earth Sciences
including: Mineralogy,
Geology, Gemology,
Paleontology, and
Crystallography



Lynchburg Rock
Raiders is the
official FRA
association of
The Gem &
Mineral Society
of Lynchburg,
VA INC



**Faber Mine Field Trip
October 2008**

