



September Newsletter

9/2023

Volume 2023, Number 9

In This Issue

- [President's Meanderings](#)
- [Programs for the future](#)
- [Note from the Editor](#)
- [Field Trips](#)
- [Shows Nearby](#)
- [Note from Membership Chairperson](#)
- [Meeting minutes](#)
- [Interesting Article Every Rock Tells a Story](#)
- [Other Links](#)

**Meeting at the
715 Moose Lodge Hall
2307 Lakeside Dr.
Lynchburg, VA 24501
3rd Tuesday of the month
7:00 pm until 9:00 pm.**

**Wintery weather meetings
schedule is if the Lynchburg
schools are down for
weather then the meeting is
cancelled**

**Workshop is the 2nd Saturday
of the month.**

President's Meanderings:

By James Tomlin

Hello Everyone,

As tick season comes to a close I am thankful for cooler weather and the opportunity to collect in comfort. I am looking forward to our upcoming trip to Willis Mountain dig this month and seeing friends from our club and surrounding areas. If this is your first time, I can say you are in for a treat! The mountain is always bountiful and the Kyanite Mining Company folks are amazing. Safety is always of the utmost importance and it is up to all of us to police ourselves and others. We will have our annual safety brief this month and examples of material to be collected.

I would like to say thank you to all that have stepped up on the board to help keep our society not only going but thriving. I appreciate all that you do and I admire your efforts to keep things running smoothly. Our membership as a whole is composed of wonderful individuals who are very kind and helpful. Thank you all for the help at meetings during setup and breakdown. For the food and camaraderie at our monthly workshops. All of the hard work at our shows, workshops and events. You all are a powerful force that makes us strong in our community.

Your Fellow Rockhound,
James Tomlin
President GMSL

2023 Officers

PRESIDENT

James Tomlin
(434)258-2886
tomlin.jamesm@yahoo.com

First Vice President

Vacant

Second Vice President

Vacant

Secretary – Holly Tomlin

Fireeyez1981@yahoo.com

Treasurer – Joan Moore

jmoore64@msn.com

Membership – Thom Noble

thom-noble@hughes.net

Editor – Steve Gordon

(434) 942-1836
stevegordon@comcast.net

Members At Large -

Eric Routon

Karina Johnson

Youth Out Reach

Programs for 2023

September: safety brief for the year and presentation on materials to collect at Willis Mt.

October: guest speaker Josh Wilson Director of product support for Boxley industries.

November: Club Members only Auction- Cutting rough, specimens and equipment. Officer nominations.

December: GMSL Christmas party- pot luck, dirty Santa, scholarship awards, Officer elections.

Note from the Editor

Hello All,

Well we are now just weeks away from Fall and hopefully cooler weather.

I would love some pictures from any of you and about anything to put in the newsletter. I am giving out of my own pictures so please send me some of yours. Or give me something else to put in the place. That would give me some other inspiration and maybe bring joy to others also.

That is all for now,
Steve

Field Trips

Club Field Trips

Sept – Willis Mountain - 9/23/23

October – Mount Athos – 10/21/23

Others are still coming in

South Eastern Federation Field Trips (Dixie Mineral)

NOTE: DMC field trips will continue to be planned and scheduled, but may be cancelled or rescheduled pending COVID-19 status. If there are any changes to a trip, all contacts listed for DMC member clubs will be notified via email as soon as possible. The DMC trip schedule page on the SFMS website (<https://www.southeastfed.org/sfms-field-trips/dmc-field-trip-program/dmc-field-trip-schedule>) will also be updated with the current status of trips. **Lori Carter, DMC Coordinator**

Sept. DMC field trip is ours to Willis Mountain.

Oct. DMC is through the Montgomery Gem & Mineral Society

If you did not get the email let me know and I will send it to you.

GMSL Membership Report

Hi Folks,

We are up to 221 members. We are getting close to that all time high population of 231 members.

Our Membership is still growing. We are now at 116 individual and family memberships comprised of a total of 221 members. It is not an all-time high but it is getting close!

I would like to welcome the following new members:

Robin Doss, Roy Doss, Laettner Doss, Langdyn Doss, Cord Doss, Jeff Doss, Sean Culver and Wesley Culver

Zachary Freeman

Kevin Ashment

Mark Goodman

Christopher Melton

Lindsey Putt

We now have thirteen new members!

Please make them feel welcome when you see them.

We are now in September, elections for club officers will be in a couple of months. We have been operating with vacancies in the First Vice President, Second Vice President and second Member at Large positions for several years now. Please give consideration to volunteering your time to the club this coming year so that we can keep the club going.

Thanks,

Thom Noble

Membership Chair

Here are a few things that being a member gives you:

- * receive our monthly newsletters
- * attend our monthly meetings
- * participate in members-only GMSL fieldtrips to quarries, mines, & events related to gems & minerals
- * Purchase club t-shirts or hoodies
- * Discounts with several "rock" stores and vendors for current members with badges
- * attend our club member's only workshop each month
- * A chance to win a \$500 annual scholarship.

Gem & Mineral Society of Lynchburg Meeting Minutes

August 15, 2023 @ 7:00

Attendance: 36 Members 3 Guests

Meeting Called to Order by: James Tomlin

On Time Drawing Winners: Lizzy Glover, Mark Goodman, Karen Bridgett, Gessi Wright, Caroline Wright, Sydney Tomlin, Jim Hagstrom and Kyrina Johnson.

50/50 Winner: Melinda Sargent won \$8.00 and donated it back to the club.

Old Business: none

New Business: We have our Willis Mtn field trip coming up on September 23rd. Please sign up before you leave tonight. We will have our safety brief for this trip at our September meeting. Please plan to attend if you haven't gone on this trip before.

We need help at our monthly workshop creating inventory for our November show. If you are able to help out you will earn a ticket each day you help for our annual scholarship drawing for a trip to William Holland or Wild Acres. We will be giving away 2 scholarships this year at our December Meeting.

We will be having a field trip to Mt. Athos coming up in October. Will give more information out as it gets closer.

Program: Dr. Joe Keiper gave a presentation on the Museum of Natural History in Martinsville and their plans to open a second museum.

Executive Board Meeting

No Executive Board meeting for Aug., 2023

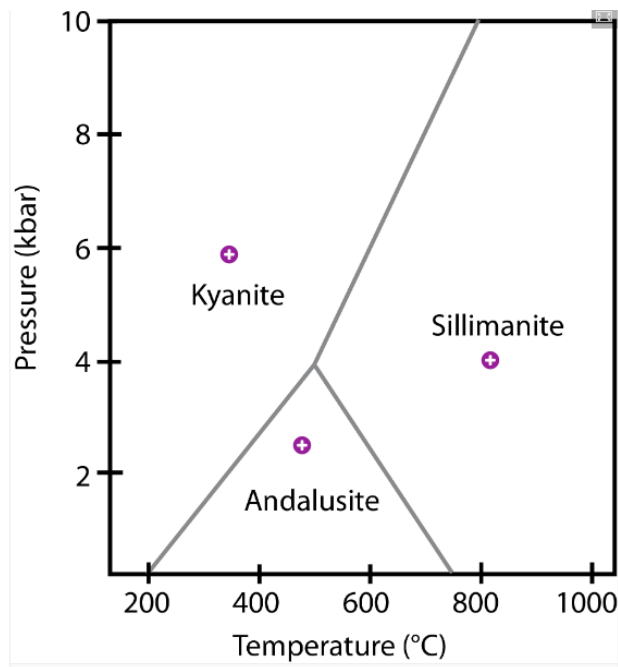
Every Rock Tells a Story - Polymorphs of Kyanite

By: SJBoylan

Polymorphs are minerals with the same compound formula but different crystal structures. In the Audubon Rock Guide, kyanite, sillimanite and andalusite are listed as minerals. Kyanite has a compound formula of Al_2SiO_5 and a crystal structure in space group $P\bar{1}$. Sillimanite has a compound formula of Al_2SiO_5 and a crystal structure in the space group $P6/m$. Andalusite has a compound formula of Al_2SiO_5 and a crystal structure in the space group $Pn\bar{m}$. Space groups can be found in the American Mineral Structure Database. Kyanite, sillimanite and andalusite are polymorphs because the compound formulas are the same but the crystal structures are different.

The diagram below is a phase diagram for kyanite, sillimanite and andalusite. The vertical Y axis is pressure in units of kbar. Pressure multiplied by the change in volume is energy transfer by work. Therefore the Y axis refers to energy transfer by work. The horizontal axis is temperature in degrees Celsius. Temperature multiplied by the change in entropy is energy transfer by heat transfer. Therefore the X axis refers to energy transfer by heat transfer.

The lines on the diagram indicate equilibrium conditions where two phases can exist. The intersection of the three lines in the middle of the diagram is a triple point where all three phases can exist. The slope of the lines indicates a relation between work and heat transfer. The diagram is from An Introduction to Geology opengeology.org



Other Links that you may want to check out:

Mineral Cleaning for Amateurs

John's website is full of information that all mineral collectors will find useful and interesting.
<http://www.johnbetts-fineminerals.com/>

Morefield Mine Tour:

<https://www.youtube.com/watch?v=u5aQp57HMso>

Impromptu lecture on crystallography:

The crystallography talk can be found in the You Tube videos at https://youtu.be/sTtxMrh9_QI, or copy and paste in your browser: Crystallography by Dave Woolley.

Rock collecting guide for geology beginners

<https://www.basementguides.com/rock-collecting-and-geology-basics/>

Facebook Link for the club

<https://www.facebook.com/groups/432839874271992/?ref=share>

Link to Mindat web page for Willis Mountain

[Willis Mountain Mine, Sprouses Corner, Farmville Mining District, Buckingham Co., Virginia, USA \(mindat.org\)](http://mindat.org)

If you need to renew your club membership you can let me or Thom Noble know and we can email you the form. You can make checks out to GMSL.

Our Mailing address is:

The Gem and Mineral Society of Lynchburg, VA, INC.

PO Box 11975

Lynchburg, VA 24506-1975

lynchburgrockclub@yahoo.com

The Gem and Mineral Society of Lynchburg, VA, INC.

PO Box 11975, Lynchburg, VA 24506-1975

Membership Application



This form is also downloadable from our website www.lynchburgrockclub.org

I/We wish to apply for membership in The Gem and Mineral Society of Lynchburg, VA, Inc. ("GMSL") and agree to abide by the Society's By-laws.

New membership Renewal **Check One**

New Membership Renewal

If Renewal: Please check box above if any contact information has changed

Please PRINT all information and write names as you would like them to be shown on your membership badge.

Applicant(s): _____ Today's date: _____

Mr. / Ms. _____ [Primary **voting** Membership]

Spouse / Partner: _____ [Additional **voting** Membership]

Street Address (required): _____

City/Town: _____ State: _____ ZIP: _____

Phone #1: () _____ #2 () _____ E-mail: _____

We will email you our monthly GMSL Newsletters & Field Trip notices (we will not share your information with outsiders)

Minor Dependents: _____ (Secondary Memberships, **non-voting**)

Membership Fees: _____ Covers through December 31st this year

SINGLE: 1 adult, 18 years & over \$15.00 \$ _____

OR

FAMILY: Up to 2 adults and minor dependents \$25.00 \$ _____

Payment by check preferred! Check # _____ Cash _____ Total \$ _____

Make check payable to "The Gem and Mineral Society of Lynchburg, VA, Inc." or "GMSL" and mail completed application form and dues to: GMSL PO Box 11975, Lynchburg, VA 24506-1975, (or bring membership application & dues to our monthly meeting). Note: There is a limit of 2 primary "voting" memberships per family. **All membership dues must be renewed between January 1st thru 15th annually to continue with GMSL.** If you pay dues by check, allow us 2 – 4 weeks to cash your check, however, your new membership badge(s) should arrive by mail within 2 weeks of paying.