



December Newsletter

12/2023

Volume 2023, Number 12

In This Issue

- [President's Meanderings](#)
- [Programs for the future](#)
- [Note from the Editor](#)
- [Field Trips](#)
- [Shows Nearby](#)
- [Note from Membership Chairperson](#)
- [Meeting minutes](#)
- [Interesting Article Every Rock Tells a Story](#)
- [Other Links](#)

**Meeting at the
715 Moose Lodge Hall
2307 Lakeside Dr.
Lynchburg, VA 24501
3rd Tuesday of the month
7:00 pm until 9:00 pm.**

**Wintery weather meetings
schedule is if the Lynchburg
schools are down for
weather then the meeting is
cancelled**

**Workshop is the 2nd Saturday
of the month.**

President's Meanderings:

By James Tomlin

Hello All,

Last month we attended the Roanoke clubs annual Gem and Mineral show. We had a blast up there as usual and they did a heck of a job putting it on. Our club had a great showing with various volunteers. I would like to thank all of our volunteers for all of their hard work and dedication to our club. We are very fortunate to have such wonderful people among us that help to keep the club alive and thriving.

This month we have our annual Christmas party on the 19th. The club will provide Chicken this year from Merredith's, dinner rolls and some drinks. Members will be bringing pot luck dishes and other goodies. We will be playing Dirty Santa again this year so please bring a gift of around \$20 if you would like to participate. We will have our officer elections for the beginning of next year. Scholarship drawings will be held during the party as well, with 2 winners being named for this upcoming year!

As we come to a close this year, I would like to thank each and every one of you for such a wonderful year. I have enjoyed our time together, meeting some of you for the first time this year and others continuing our friendships. I hope the close of the year brings you peace and prosperity.

Your Fellow Rockhound
James Tomlin
President GMSL

2023 Officers

PRESIDENT

James Tomlin
(434)258-2886
tomlin.jamesm@yahoo.com

First Vice President
Vacant

Second Vice President
Vacant

Secretary – Holly Tomlin
Fireeyez1981@yahoo.com

Treasurer – Joan Moore
jmoore64@msn.com

Membership – Thom Noble
thom-noble@hughes.net

Editor – Steve Gordon
(434) 942-1836
stevegordon@comcast.net

Members At Large -
Eric Routon
Karina Johnson
Youth Out Reach

Programs for 2023

December: GMSL Christmas party- pot luck, dirty Santa, scholarship awards, Officer elections.

January: Will be a meet and teach. The exact layout isn't complete yet so more when you get to the meeting.

Note from the Editor

Hello All,

I hope all of you are doing well and are ready for Christmas. The meeting will be our club dinner and as years before the food will be good but the company will be great. I wish all of you a very merry Christmas and a Happy new Year. This will be my last Newsletter if the elections goes as I expect but know that I am always available if you have any questions.

That is all for now,
Steve

Officers that are on the ballot are:

President – James Tomlin

First Vice – Steve Gordon

Second Vice – James Tomlin

Treasurer – Joan Moore (looking for a shadow)

Secretary - Holly Tomlin

Newsletter Editor – Sena Magill

Membership Chair – Thom Noble turning over to Carl Pilat

Members at Large – Karina Johnson and Ben Thompson

Note from the Member at Large Youth Programming

I am happy to be finishing my first year serving the club in the role of Member-At-Large for Youth Programs. I have tried out a couple activities for youth during the breaks at our monthly meetings. My plan is to offer those whenever I am able.

Sarah Hanrahan and I represented the club at a youth summer camp educating and exploring rocks with a fun group of students. We had a blast exploring plate tectonics and Virginia minerals.

My plan for the upcoming year is to build a kit for youth programming that will have a dedicated use at club activities. I would also like to enlist a couple more members to help me with club and external youth programming.

I am looking forward to growing our program over the next year!

Kyrina

GMSL Membership Report

Our Membership is still growing. We are now at 123 individual and family memberships comprised of a total of 232 members.

I would like to welcome the following new members:

Penny & Elizabeth Gardner

Mason Edmiston

Adam Frick

Please make them feel welcome when you see them.

I will be sending out an email this month that memberships are expiring at the end of December. The email will have a printable application attached. If any of your contact information has changed, please fill this application out and send it with your dues. Please help me by renewing your membership as early as possible.

Elections for club officers will be held this month at the meeting. We have been operating with vacancies for several years now. We are encouraging folks to shadow the existing officers to get an idea as to what the job entails. Please give consideration to volunteering your time to the club this coming year so that we can keep the club going strong.

Thanks,

Thom Noble

Membership Chair

Here are a few things that being a member gives you:

- * receive our monthly newsletters
 - * attend our monthly meetings
 - * participate in members-only GMSL fieldtrips to quarries, mines, & events related to gems & minerals
 - * Purchase club t-shirts or hoodies
 - * Discounts with several "rock" stores and vendors for current members with badges
 - * attend our club member's only workshop each month
 - * A chance to win a \$500 annual scholarship.
-

Gem and Mineral Society of Lynchburg Meeting Minutes

November 21, 2023 7:00pm

Meeting Called to Order by: James Tomlin

Attendance: 28 Members 1 Guest

Our Annual November Club Auction brought in a total of \$1,594.00.

Gem & Mineral Society of Lynchburg Executive Board Meeting

Friday December 8, 2023 @ 6:30pm

Members in Attendance: James Tomlin, Holly Tomlin, Thom Noble, Linda Noble and Steve Gordon.

Members in Training in Attendance via FaceTime: Sena Magill & Carl Pilat

Members not present: Kyrina Johnson, Joan Moore and Member in training Ben Thompson

The Executive Board:

- Briefed Members in training on their upcoming positions
- answered questions that members in training had about their positions
- discussed and agreed to have a meeting in January to update the bylaws.

Meeting Adjourned at: 7:45pm

Field Trips Club Field Trips

Others are still coming in

South Eastern Federation Field Trips (Dixie Mineral)

NOTE: DMC field trips will continue to be planned and scheduled, but may be cancelled or rescheduled pending COVID-19 status. If there are any changes to a trip, all contacts listed for DMC member clubs will be notified via email as soon as possible. The DMC trip schedule page on the SFMS website (<https://www.southeastfed.org/sfms-field-trips/dmc-field-trip-program/dmc-field-trip-schedule>) will also be updated with the current status of trips. **Lori Carter, DMC Coordinator**

Nov. DMC is through the Western South Carolina Gem & Mineral

Dec. DMC is through Rome Georgia Mineral Society, Rome, GA

If you did not get the email let me know and I will send it to you.

Every Rock Tells a Tectonic Story - Evington Formation

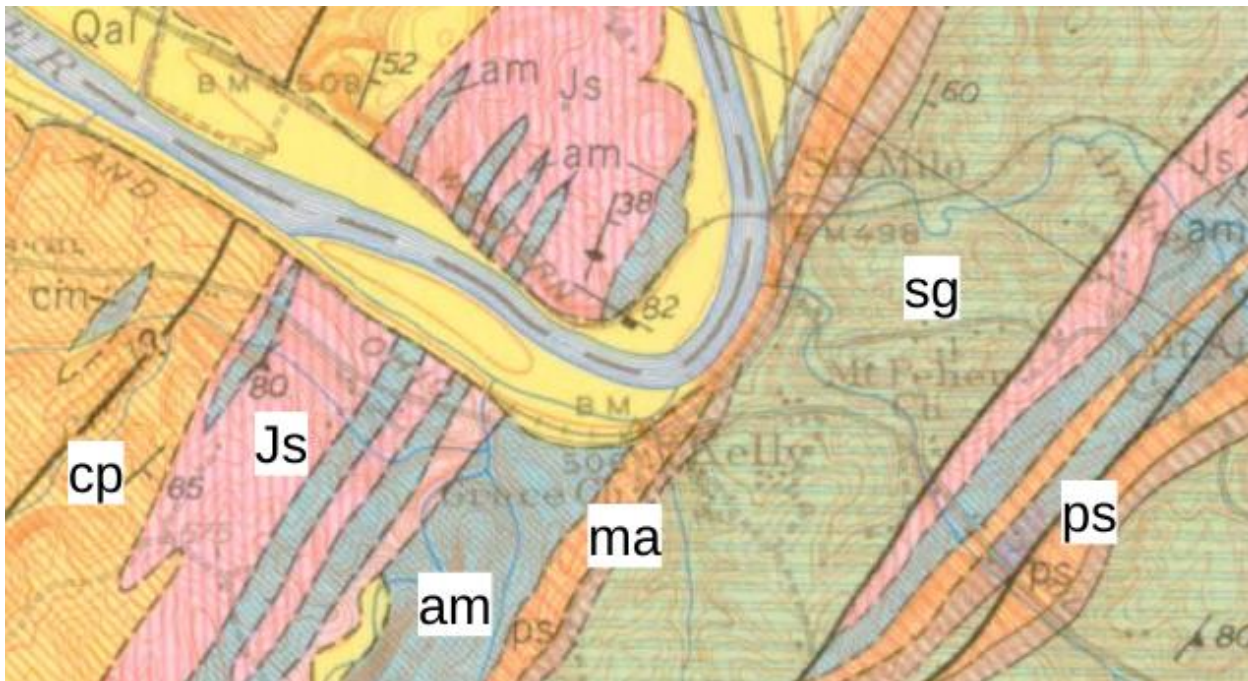
By: SJBoylan

In Bulletin 74, by author W. R. Brown, 1958, the map of the Lynchburg quadrangle indicates the Evington group.

The Evington group contains six formations. The map section below shows the formations of the Evington group. This map section is east of Lynchburg on Highway 460 around Moore's Country store.

Slippery Creek greenstone is designated by sg with green stripes. Mount Athos formation is designated by ma with colors gray with red stripes. The Mount Athos formation is quartzite, quartzite conglomerate, and mica schist. Pelier schist is designated by ps with color yellow with orange stripes. Pelier schist is tan. Arch marble is designated by am with color blue. Arch marble is a blue-gray, schistose marble. Joshua schist is designated by Js with the color pink with stripes. The Joshua schist is blue-gray phyllite and fine-grained schist. Candler formation is designated by cp with color yellow with orange stripes. The Candler formation is gray-green phyllite and fine- to coarse-grained schist.

Try these questions. How many formations are in the Evington group? List the names and the species for each of the formations in the Evington group.



Other Links that you may want to check out:

Mineral Cleaning for Amateurs

John's website is full of information that all mineral collectors will find useful and interesting.
<http://www.johnbetts-fineminerals.com/>

Morefield Mine Tour:

<https://www.youtube.com/watch?v=u5aQp57HMso>

Impromptu lecture on crystallography:

The crystallography talk can be found in the You Tube videos at https://youtu.be/sTtxMrh9_QI, or copy and paste in your browser: Crystallography by Dave Woolley.

Rock collecting guide for geology beginners

<https://www.basementguides.com/rock-collecting-and-geology-basics/>

Facebook Link for the club

<https://www.facebook.com/groups/432839874271992/?ref=share>

Link to Mindat web page for Willis Mountain

[Willis Mountain Mine, Sprouses Corner, Farmville Mining District, Buckingham Co., Virginia, USA \(mindat.org\)](#)

If you need to renew your club membership you can let me or Thom Noble know and we can email you the form. You can make checks out to GMSL.

Our Mailing address is:

**The Gem and Mineral Society of Lynchburg, VA, INC.
PO Box 11975
Lynchburg, VA 24506-1975
lynchburgrockclub@yahoo.com**

The Gem and Mineral Society of Lynchburg, VA, INC.

PO Box 11975, Lynchburg, VA 24506-1975

Membership Application



This form is also downloadable from our website www.lynchburgrockclub.org

I/We wish to apply for membership in The Gem and Mineral Society of Lynchburg, VA, Inc. ("GMSL") and agree to abide by the Society's By-laws.

New membership Renewal

New Membership Renewal

If Renewal: Please check box above if any contact information has changed

Please PRINT all information and write names as you would like them to be shown on your membership badge.

Applicant(s): _____ Today's date: _____

Mr. / Ms. _____ [Primary voting Membership]

Spouse / Partner: _____ [Additional voting Membership]

Street Address (required): _____

City/Town: _____ State: _____ ZIP: _____

Phone #1: () _____ #2 () _____ E-mail: _____

We will email you our monthly GMSL Newsletters & Field Trip notices (we will not share your information with outsiders)

Minor Dependents: _____ (Secondary Memberships, non-voting)

Membership Fees: _____ Covers through December 31st this year

SINGLE: 1 adult, 18 years & over \$15.00 \$ _____

OR

FAMILY: Up to 2 adults and minor dependents \$25.00 \$ _____

Payment by check preferred! Check # _____ Cash _____ Total \$ _____

Make check payable to "The Gem and Mineral Society of Lynchburg, VA, Inc." or "GMSL" and mail completed application form and dues to: GMSL PO Box 11975, Lynchburg, VA 24506-1975, (or bring membership application & dues to our monthly meeting). Note: There is a limit of 2 primary "voting" memberships per family. All membership dues must be renewed between January 1st thru 15th annually to continue with GMSL. If you pay dues by check, allow us 2 – 4 weeks to cash your check, however, your new membership badge(s) should arrive by mail within 2 weeks of paying.